



PETER COOK
INTERNATIONAL



petercookint.com

V3

Copyright Peter Cook International.
All rights reserved.

Reproduction in whole or part prohibited without written permission.

Due to our policy of continuous improvement Peter Cook International reserves the right to amend specifications and designs without prior notice. The finishes shown are as accurate as possible within the limits of the printing process.

All details are correct at time of going to press.



Contents

| | | | |
|------------------|----|-------------------|-----|
| Oak Wooden Feet | 8 | Lining Cloth | 64 |
| Wooden Feet | 10 | Crib 5 Lining | 65 |
| Queen Anne Legs | 27 | Fibres & Felts | 66 |
| Metal Legs | 28 | Coir & Fillings | 68 |
| Castors | 32 | Interior Products | 69 |
| Plastic Glides | 38 | Button Parts | 70 |
| Moulded Legs | 40 | Labels & Tags | 72 |
| Floor Protectors | 41 | Sewing Sundries | 74 |
| Adhesives | 42 | Foam & Cushions | 76 |
| Aerosols | 43 | Polyfoam | 78 |
| Staples & Nails | 44 | Fixings | 80 |
| Staple Guns | 46 | Struts & Hinges | 81 |
| Webbing | 48 | Connectors | 82 |
| Zip & Sliders | 50 | Bedding | 83 |
| Hook & Loop | 51 | 2-Fold Mechanisms | 84 |
| Springs & Clips | 52 | 3-Fold Mechanisms | 85 |
| Decorative Nails | 54 | Swivel Bases | 86 |
| Tacking Strip | 58 | Glass Buttons | 87 |
| Piping Cord | 60 | Tools & Needles | 88 |
| Edge Roll | 61 | Ambla Fabric | 96 |
| Base Cloth | 62 | Faux Leather | 104 |
| Platform Cloth | 63 | Packaging | 106 |





PCI North

T: 0113 235 1111

E: sales@petercookint.com

PCI Midlands

T: 0115 946 0006

E: trentside@petercookint.com

PCI South

T: 01844 873122

E: south@petercookint.com



Our Mission

To be recognised as the UK's most trusted stockist of furniture components

Hello once again and welcome to the latest edition of our PCI catalogue. I am pleased to say we have honoured our commitment to produce an up to date version every two years after listening to your feedback and appetite for something in print.

We have some great additions in the wooden foot section and in particular we really love the new colours in the oak timber range. On the metal legs we have also expanded our range of styles and have three new finishes to match the latest trends. In fact I am sure as you flick through the pages you will be pleased to see the new ranges of staples, air tools, the new Union Jack labels, more upholstery tools and a vastly improved range of the popular Ambla fabrics.

Here at PCI we appreciate that the market is competitive and as a customer you have plenty of choice on where to buy your components and sundries. We genuinely believe in our mission to become the UK's most trusted stockist of furniture components. We value long term relationships between a happy customer and a happy supplier, so we can succeed together. We want to be held accountable to our seven PCI pledges which are outlined as follows;

- #1 be a reliable stockist; the pictures in our catalogue reflect the product on our shelves
- #2 to keep things simple and ensure that buying from us is easy
- #3 search far and wide to source the most suitable solution for your need
- #4 operate a common-sense approach and be flexible
- #5 go the extra mile, even when it may not be expected
- #6 always be approachable, helpful and friendly
- #7 pick up the phone, keep you informed, manage expectations and then ultimately deliver on our promises

If at any time you feel we have not met your expectations as a supplier, or have failed to meet our pledges please get in touch. We value all feedback to help us to continue to improve as a supplier. You can contact us with your comments on **0113 235 1111** or at **feedback@petercookint.com**. Please free feel to ask for myself personally and I will be happy to speak with you.

Thank you



Martin Cave | General Manager

Wooden Feet

Once again our wooden foot range takes pride of place at the front of our latest catalogue. We have 20 pages of varying designs and colours where we believe there is something for everyone's tastes. Everything you see on these pages we have committed to keep in stock.

We lead with the oak timber range where we have added six new designs, two new colours and an FSC® option as standard.

Our core beech timber range has been refreshed to include sixteen new products and more FSC® options across various styles. We have nine different finishes for the beech which feature throughout and four different colour options for our accompanying castors. You will find 290 different options to choose from in this section which we hope will allow us to service the vast majority of your requirements from our stock.

If FSC® is something you require on any of the styles that feature we can accommodate your request on a quantity as low as a single box.

If you require any of the feet shown in one of our nine finishes we can accommodate with a quantity of just a single box.

In addition if it is your bespoke design you would like producing, we can help on a production run of just two hundred pieces with a lead time of only four to six weeks.

We can even discuss producing our feet in other types of timber such as ash if oak or beech are not suitable for your client.

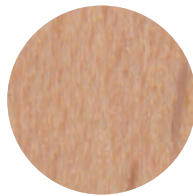
Again it is worth mentioning that the feet shown here are what we intend to keep on the shelf.



A touch of colour

Our beech colour range showcases nine finishes from light to dark and distressed.

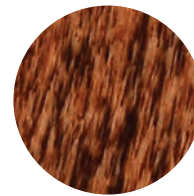
We are able to produce any of the feet shown in the catalogue in the colours listed below subject to a minimum order requirement. We are also able to amend the colours to create a matt or satin effect which again is subject to a minimum order requirement. The sample colours shown are intended to give an indication only of what options are available. Variance may occur between styles and batches as these are natural wood products.



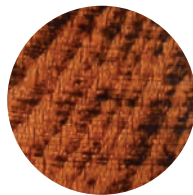
Sanded
Unpolished



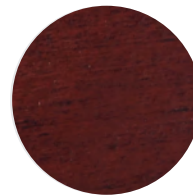
Natural Gloss



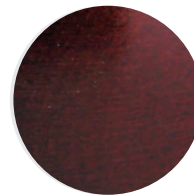
Old Oak



Antique Brown



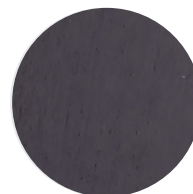
Antique Mahogany



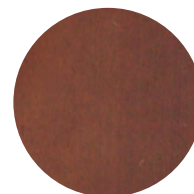
Mahogany Gloss



Dark Walnut



Wenge



Dark Brown

Oak Wooden Feet

PCI are pleased to launch our two new colourways in the oak timber range.

The following styles are ones we have committed to keep in stock. Please do not hesitate to get in contact if you have any other requirements for oak feet. Subject to a minimum order requirement we can produce any of the feet shown in our catalogue in oak timber.



Code
OAK85

Size
H 65mm
D 105mm

Finish
Raw Oak



Code
OAK80

Size
H 120mm
T 65mm
B 40mm

Finish
Natural Oak



Code
OAK100

Size
H 43mm
L 160mm

Finish
Natural Oak



Code
OAK117

Size
H 63mm
T 92mm
B 65mm

Finish
Aged Oak



Code
OAK114

Size
H 130mm
D 112mm

Finish
Aged Oak



Code
OAK252

Size
H 103mm
T 72mm
B 40mm

Finish
Natural Oak



Code
OAK200

Size
H 70mm
D 145mm

Finish
Smoky Oak



Code
OAK146

Size
H 103mm
T 70mm
B 50mm

Finish
Raw Oak



Code
OAKFSCI

Size
H 150mm
T 70mm
B 33mm

Finish
Grey Oak



Code
OAK090

Size
H 135mm
T 110mm
B 50mm

Finish
Smoky Oak



Code
OAK1362

Size
H 124mm
T 78mm
B 52mm

Finish
Weathered Oak



Code
OAK404

Size
H 153mm
T 68mm
B 36mm

Finish
Grey Oak



Code
OAK244

Size
H 39mm
T 155mm
B 135mm

Finish
Natural Oak

Wooden Feet

We love the wide range of options we can offer across our castor leg range.

We can assist with a classic or contemporary look depending on your requirements.

Something else?

Please visit [page 16](#) if you require a back leg to match.



Code
WFC001

Size
H 104mm
D 95mm

Finish
Dark Walnut, Antique Brown,
Mahogany Gloss, Wenge



Code
WFC002

Size
H 104mm
D 95mm

Finish
Dark Walnut, Antique Brown,
Mahogany Gloss, Wenge



Code
WFC003

Size
H 104mm
D 95mm

Finish
Dark Walnut, Antique Brown,
Mahogany Gloss, Wenge



Code
WFC004

Size
H 104mm
D 95mm

Finish
Dark Walnut, Antique Brown,
Mahogany Gloss, Wenge



Code
WFC009

Size
H 120mm
D 90mm

Finish

Antique Brown, Antique Mahogany,
Dark Walnut, Natural Gloss



Code
WFC010

Size
H 120mm
D 90mm

Finish

Antique Brown, Antique Mahogany,
Dark Walnut, Natural Gloss

Be sure to visit
petercookint.com
for our latest
promotional
offers.

For T-Nuts,
D-Nuts and other
fixing solutions
see **page 80.**



Code
WFC011

Size
H 120mm
D 90mm

Finish

Antique Brown, Antique Mahogany,
Dark Walnut, Natural Gloss



Code
WFC014

Size
H 120mm
D 90mm

Finish

Antique Brown, Antique Mahogany,
Dark Walnut, Natural Gloss

With 4 colour finishes available in each style and 4 colour options on the corresponding castor, that equals 96 different combinations on these first two pages alone!

We assemble these legs in-house to our customer's specification with no minimum order stipulation. If you would like us to send you images of different combinations to help you make a final decision please contact a member of the Sales Team who will be happy to help.

Castor Legs

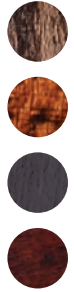
For a straight back leg to accompany these castor legs please see [page 23](#).



Code
WFC019

Size
H 150mm
D 120mm

Finish
Dark Walnut, Antique Brown, Wenge,
Antique Mahogany



Code
WFC020

Size
H 150mm
D 120mm

Finish
Dark Walnut, Antique Brown, Wenge,
Antique Mahogany



Code
WFC021

Size
H 150mm
D 120mm

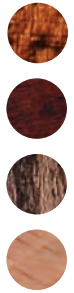
Finish
Dark Walnut, Antique Brown, Wenge,
Antique Mahogany



Code
WFC022

Size
H 150mm
D 120mm

Finish
Dark Walnut, Antique Brown, Wenge,
Antique Mahogany



Code
WFC023

Size
H 150mm
D 120mm

Finish
Antique Brown, Antique Mahogany,
Dark Walnut, Natural Gloss



Code
WFC024

Size
H 150mm
D 120mm

Finish
Antique Brown, Antique Mahogany,
Dark Walnut, Natural Gloss



Code
WFC025

Size
H 150mm
D 120mm

Finish
Antique Brown, Antique Mahogany,
Dark Walnut, Natural Gloss



Code
WFC026

Size
H 150mm
D 120mm

Finish
Antique Brown, Antique Mahogany,
Dark Walnut, Natural Gloss



Code
WFC005

Size
H 120mm
W 83mm

Finish
Antique Mahogany, Wenge,
Antique Brown, Dark Walnut



Code
WFC006

Size
H 120mm
W 83mm

Finish
Antique Mahogany, Wenge,
Antique Brown, Dark Walnut



Code
WFC007

Size
H 120mm
W 83mm

Finish
Antique Mahogany, Wenge,
Antique Brown, Dark Walnut



Code
WFC008

Size
H 120mm
W 83mm

Finish
Antique Mahogany, Wenge,
Antique Brown, Dark Walnut



Code
WFC031

Size
H 130mm
W 92mm

Finish
Wenge, Old Oak, Dark Walnut,
Antique Brown

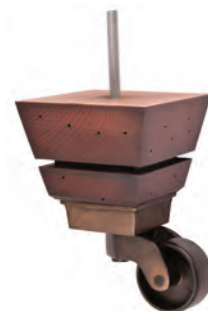
All feet on
pages 10-13 are
fitted with a
castor measuring
50mm wide.



Code
WFC032

Size
H 130mm
W 92mm

Finish
Wenge, Old Oak, Dark Walnut,
Antique Brown



Code
WFC033

Size
H 130mm
W 92mm

Finish
Wenge, Old Oak, Dark Walnut,
Antique Brown



Code
WFC034

Size
H 130mm
W 92mm

Finish
Wenge, Old Oak, Dark Walnut,
Antique Brown

Castor Legs



Code
WFC12

Size
H 155mm
D 65mm

Finish
Mahogany Gloss, Natural Gloss,
Sanded Unpolished



Code
WFE051

Size
H 155mm
D 65mm

Finish
Natural Gloss, Mahogany Gloss



Code
WFC038

Size
H 155mm
D 65mm

Finish
Antique Brown



Code
WFC13

Size
H 120mm
D 73mm

Finish
Mahogany Gloss, Natural Gloss



Code
WFE074

Size
H 120mm
D 75mm

Finish
Mahogany Gloss



Code
WFC16

Size
H 148mm
D 65mm

Finish
Mahogany Gloss

#1 PCI Pledge
PCI pledge to be a reliable stockist;
the pictures in our catalogue reflect
the product on our shelves.



Code
WFC035

Size
H 170mm
D 80mm

Finish
Antique Mahogany, Antique Brown



Code
WFC14

Size
H 160mm
D 75mm

Finish
Antique Brown



Code
WFC036

Size
H 170mm
D 80mm

Finish
Wenge



Code
WFE103

Size
H 170mm
D 75mm

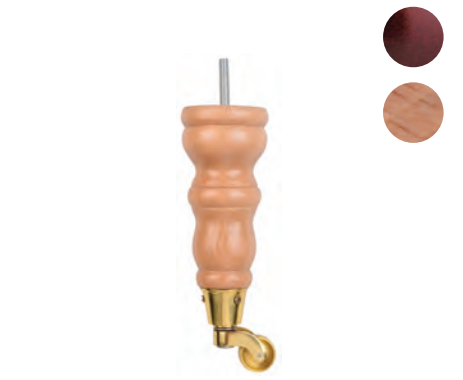
Finish
Mahogany Gloss



Code
WFE104

Size
H 170mm
D 75mm

Finish
Mahogany Gloss



Code
WFC18

Size
H 200mm
D 65mm

Finish
Mahogany Gloss, Natural Gloss

We would be happy to discuss other combinations of castors and feet across these two pages which you may have in mind. For bespoke enquires please contact the Sales Team and we can assist in bringing your idea to life.

Angled Back & L Shape



Code
WF224

Size
H 114mm
T 84x43mm
B 58x43mm

Finish
Mahogany Gloss, Antique Brown



Code
WF478

Size
H 94mm
T 95x45mm
B 35x45mm

Finish
Mahogany Gloss



Code
WFT55

Size
H 77mm
T 84x42mm
B 58x42mm

Finish
Mahogany Gloss, Natural Gloss



Code
WF1365

Size
H 100mm
T 74x39mm
B 50x39mm

Finish
Wenge, Antique Mahogany,
Dark Walnut



Code
WF1367

Size
H 125mm
T 74x39mm
B 50x39mm

Finish
Sanded Unpolished



Code
WF1364

Size
H 136mm
T 74x39mm
B 50x39mm

Finish
Antique Brown, Sanded Unpolished,
Mahogany Gloss



Code
WF1366

Size
H 175mm
T 74x39mm
B 50x39mm

Finish
Sanded Unpolished



Code
WF1368

Size
H 215mm
W 75mm

Finish
Sanded Unpolished, Mahogany Gloss

Any of our
wooden feet can
be produced in
Oak timber. For
more information,
see **page 8**.



Code
WF244

Size
H 39mm
T 155mm
B 135mm

Finish
Mahogany Gloss, Natural Gloss,
Old Oak, Wenge



Code
WFSC33

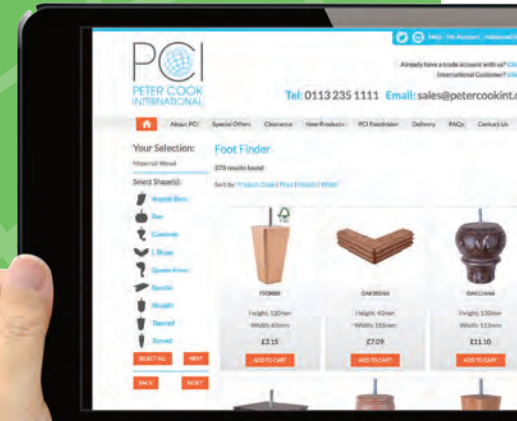
Size
H 40mm
T 160mm

Finish
Mahogany Gloss, Natural Gloss,
Sanded Unpolished, Dark Walnut

For T-Nuts,
D-Nuts and other
fixing solutions
see **page 80**.

The PCI Footfinder is available to use online at www.petercookint.com to help you find your ideal wood, metal or plastic foot.

A bespoke designed tool, it allows you to enter your foot requirements; material, dimensions and finish, then will recommend the closest match out of over 400 legs which we carry in stock.



Code
WFE100

Size
H 40mm
L 160mm

Finish
Sanded Unpolished



Code
WF1239

Size
H 94mm
T 138mm
B 102mm

Finish
Mahogany Gloss, Natural Gloss

We can produce any of the styles shown to the FSC® standard, see **page 6** for more information.

Bun



Code
WF256

Size
H 50mm
D 84mm

Finish
Mahogany Gloss



Code
WFA12

Size
H 43mm
W 120mm

Finish
Dark Brown, Mahogany Gloss

WFA12 is a hollow bun foot, designed to conceal a castor.



Code
WFA02

Size
H 43mm
D 110mm

Finish
Mahogany Gloss, Natural Gloss,
Old Oak, Sanded Unpolished



Code
WFA03

Size
H 43mm
D 125mm

Finish
Mahogany Gloss, Natural Gloss,
Sanded Unpolished



Code
WFA05

Size
H 43mm
D 90mm

Finish
Mahogany Gloss, Natural Gloss, Wenge

Our feet can be produced in over 9 different finishes, see [page 7](#) for more details.



Code
WFA08

Size
H 55mm
D 90mm

Finish
Mahogany Gloss, Natural Gloss,
Dark Walnut



Code
WFSC09

Size
H 55mm
D 90mm

Finish
Mahogany Gloss, Natural Gloss,
Sanded Unpolished





Code
WFE045

Size
H 50mm
D 80mm

Finish
Mahogany Gloss, Sanded Unpolished



Code
WFA10

Size
H 58mm
D 85mm

Finish
Mahogany Gloss, Natural Gloss



Code
WFSC85

Size
H 65mm
D 105mm

Finish
Mahogany Gloss, Natural Gloss,
Antique Brown



Code
WFE101

Size
H 60mm
D 120mm

Finish
Antique Mahogany, Sanded Unpolished



Code
WF258

Size
H 91mm
D 120mm

Finish
Mahogany Gloss, Natural Gloss,
Sanded Unpolished



Code
WFE189

Size
H 100mm
D 100mm

Finish
Antique Brown

We can supply, manufacture or produce wooden feet in Oak, Ash or Beech timber, to any size, shape or specification.

Special orders can be turned around in 4-6 weeks, and with minimum order quantities as low as 100 pieces on some orders, this offers an excellent bespoke production service at a very quick turnaround time.

Turned



Code
WFE122

Size
H 80mm
D 80mm

Finish
Mahogany Gloss



Code
WF1138

Size
H 80mm
T 66mm
B 30mm

Finish
Mahogany Gloss, Natural Gloss



Code
WF330

Size
H 98mm
T 90mm
B 54mm

Finish
Mahogany Gloss, Natural Gloss,
Dark Walnut **NEW**



Code
WF365

Size
H 100mm
T 88mm
B 62mm

Finish
Mahogany Gloss, Natural Gloss



Code
WFA18

Size
H 125mm
T 72mm
B 33mm

Finish
Mahogany Gloss, Natural Gloss



Code
WF1362

Size
H 124mm
T 78mm
B 52mm

Finish
Dark Brown, Mahogany Gloss,
Natural Gloss, Sanded Unpolished



Code
WF406

Size
H 155mm
T 65mm
B 30mm

Finish
Mahogany Gloss, Sanded Unpolished,
Wenge **NEW**



Code
WFSC404

Size
H 153mm
T 68mm
B 36mm

Finish
Mahogany Gloss, Natural Gloss,
Sanded Unpolished



Code
WF405

Size
H 200mm
T 68mm
B 33mm

Finish
Mahogany Gloss, Natural Gloss





Code
WFE188

Size
H 130mm
D 85mm

Finish
Antique Brown



Code
WFE090

Size
H 135mm
T 110mm
B 50mm

Finish
Mahogany Gloss, Dark Brown,
Sanded Unpolished, Wenge



Code
WFE114

Size
H 130mm
D 112mm

Finish
Mahogany Gloss



Code
WFE112

Size
H 150mm
D 85mm

Finish
Antique Brown, Wenge



Code
WFE115

Size
H 150mm
D 85mm

Finish
Dark Walnut, Dark Brown



Code
WFE124

Size
H 150mm
T 80mm
B 50mm

Finish
Mahogany Gloss, Sanded Unpolished



Code
WFE120

Size
H 180mm
D 116mm

Finish
Antique Brown, Wenge



Code
WFE119

Size
H 200mm
D 72mm

Finish
Mahogany Gloss

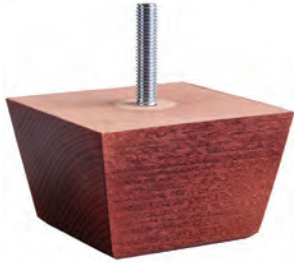


Code
WF315

Size
H 200mm
D 55mm

Finish
Natural Gloss

Square Tapered



Code

WF332

Size

H 48mm
T 80mm
B 64mm

Finish

Mahogany Gloss, Natural Gloss



Code

WSR71

Size

H 64mm
T 90mm
B 65mm

Finish

Mahogany Gloss, Natural Gloss



Code

WSR72

Size

H 63mm
T 122mm
B 95mm

Finish

Mahogany Gloss, Natural Gloss,
Sanded Unpolished, Antique Mahogany



Code

WFR48

Size

H 63mm
T 70mm
B 45mm

Finish

Mahogany Gloss, Natural Gloss,
Wenge



Code

WFQ81

Size

H 63mm
T 92mm
B 65mm

Finish

Natural Gloss, Wenge



Code

WF252

Size

H 103mm
T 72mm
B 40mm

Finish

Mahogany Gloss, Sanded Unpolished,
Natural Gloss



Code

WFSC146

Size

H 103mm
T 70mm
B 50mm

Finish

Mahogany Gloss, Natural Gloss,
Antique Brown



Code

WF331

Size

H 102mm
T 78mm
B 50mm

Finish

Mahogany Gloss, Natural Gloss,
Dark Walnut



Code

WF367

Size

H 100mm
T 88mm
B 70mm

Finish

Mahogany Gloss, Natural Gloss,
Sanded Unpolished





Code
WFE067

Size
H 100mm
T 42mm
B 33mm

Finish
Mahogany Gloss, Natural Gloss



Code
WFSC1161

Size
H 135mm
T 67mm
B 50mm

Finish
Mahogany Gloss, Natural Gloss,
Dark Walnut, Sanded Unpolished



Code
WFE109

Size
H 155mm
T 72mm
B 40mm

Finish
Sanded Unpolished



Code
WFT80

Size
H 120mm
T 65mm
B 40mm

Finish
Mahogany Gloss, Natural Gloss,
Dark Brown, Sanded Unpolished



Code
WFE035

Size
H 160mm
T 65mm
B 45mm

Finish
Mahogany Gloss, Natural Gloss,
Dark Brown, Sanded Unpolished

For T-Nuts,
D-Nuts and other
fixing solutions
see **page 80.**



Code
WFE133

Size
H 170mm
T 65mm
B 45mm

Finish
Mahogany Gloss



Code
WFE018

Size
H 200mm
T 70mm
B 45mm

Finish
Mahogany Gloss, Natural Gloss,
Dark Brown, Sanded Unpolished



Code
WFE143

Size
H 230mm
T 65mm
B 50mm

Finish
Sanded Unpolished

Round Tapered



Code
WFE142

Size
H 80mm
T 50mm
B 30mm

Finish
Sanded Unpolished



Code
WF284

Size
H 90mm
T 74mm
B 33mm

Finish
Natural Gloss, Antique Brown



Code
WFE147

Size
H 100mm
T 50mm
B 30mm

Finish
Sanded Unpolished

Check out the PCI Footfinder tool on our website to search our wood, metal and plastic feet.



Code
WFZ21

Size
H 120mm
T 56mm
B 46mm

Finish
Mahogany Gloss, Natural Gloss,
Wenge



Code
WFZ24

Size
H 154mm
T 55mm
B 34mm

Finish
Mahogany Gloss, Natural Gloss,
Sanded Unpolished



Code
WFZ26

Size
H 175mm
T 55mm
B 36mm

Finish
Sanded Unpolished



Code
WFZ27

Size
H 200mm
T 55mm
B 36mm

Finish
Sanded Unpolished



Code
WFZ25

Size
H 230mm
T 60mm
B 30mm

Finish
Mahogany Gloss, Natural Gloss

Angled



Code
WFE169

Size
H 100mm
T 60mm
B 40mm

Finish
Sanded Unpolished



Code
WFE170

Size
H 120mm
T 60mm
B 40mm

Finish
Sanded Unpolished



Code
WFE172

Size
H 135mm
T 60mm
B 40mm

Finish
Sanded Unpolished



Code
WFE174

Size
H 160mm
T 60mm
B 40mm

Finish
Sanded Unpolished



Code
WFE175

Size
H 180mm
T 60mm
B 40mm

Finish
Sanded Unpolished, Mahogany Gloss



Code
WFE176

Size
H 200mm
T 60mm
B 40mm

Finish
Sanded Unpolished



Code
WFE177

Size
H 220mm
T 60mm
B 40mm

Finish
Sanded Unpolished



Code
WFE179

Size
H 240mm
T 60mm
B 40mm

Finish
Sanded Unpolished



All of our metal dowels are an M8 thread.



Code
WFP86

Size
H 75mm
D 68mm

Finish
Mahogany Gloss, Natural Gloss



Code
WFP87

Size
H 120mm
D 68mm

Finish
Dark Brown



Code
WF903

Size
H 370mm
W 44mm

Finish
Sanded Unpolished



Code
WFE116

Size
H 40mm
W 65mm
L 180mm

Finish
Mahogany Gloss



Code
WF889

Size
H 62mm
L 168 x 144mm
W 94 x 70mm

Finish
Natural Gloss



Code
WF809

Size
H 40mm
W 180mm

Finish
Mahogany Gloss, Natural Gloss

#2 **PCI Pledge**
PCI pledge to keep things simple and ensure that buying from us is easy.

Queen Anne Legs

Our range of Queen Anne legs are manufactured in the UK and can be supplied as sanded, stained mahogany or dark oak, or even in a colour of your choice.

Contact the Sales Team to discuss your requirements further.



Code
QA06

Size
H 150mm
D 100mm

Finish
Mahogany Gloss, Sanded Unpolished,
Dark Oak



Code
QA08

Size
H 200mm
D 100mm

Finish
Mahogany Gloss, Sanded Unpolished,
Dark Oak



Code
QA09

Size
H 230mm
D 100mm

Finish
Mahogany Gloss, Sanded Unpolished,
Dark Oak



Code
QAM806
QAM808
QAM809

Size
H 150mm x D 100mm
H 200mm x D 100mm
H 230mm x D 100mm

Finish
Sanded Unpolished

Metal Legs



Code
MLP060

Size
H 60mm
D 50mm

Finish
Polished Chrome



Code
MLP203

Size
H 135mm
D 35mm

Finish
Polished Chrome



Code
MLP120

Size
H 120mm
D 50mm

Finish
Polished Chrome



Code
MLX120

Size
H 120mm
D 50mm

Finish
Black Chrome



Code
MLR120

Size
H 120mm
D 50mm

Finish
Rose Gold



Code
MLP160

Size
H 160mm
D 50mm

Finish
Polished Chrome



Code
MLPC002

Size
H 130mm
W 120mm

Finish
Polished Chrome



Code
MLMC004

Size
H 120mm
W 90mm

Finish
Matte Black



Code
MLPC022

Size
H 120mm (Adjustable)
W 135mm

Finish
Brushed Gun Metal



Code
MLPC003

Size
H 135mm
W 130mm

Finish
Polished Chrome



Code
MLRC003

Size
H 135mm
W 130mm

Finish
Rose Gold



Code
MLGC003

Size
H 135mm
W 130mm

Finish
Brushed Gun Metal



Code
LAP100

Size
H 155mm
W 155mm

Finish
Polished Chrome



Code
MLPC001

Size
H 150mm
W 120mm

Finish
Polished Chrome



Code
MLXC001

Size
H 150mm
W 120mm

Finish
Black Chrome



Code
MLPC030

Size
H 60mm
W 60mm

Finish
Polished Chrome



Code
MLXC030

Size
H 60mm
W 60mm

Finish
Black Chrome



Code
MLPC035

Size
H 90mm
W 75mm

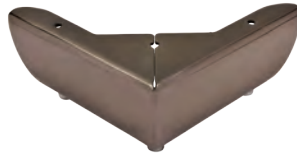
Finish
Polished Chrome



Code
MLPC020

Size
H 50mm
W 150mm

Finish
Polished Chrome



Code
MLXC020

Size
H 50mm
W 150mm

Finish
Black Chrome



Code
MLPC045

Size
H 60mm
W 190mm

Finish
Polished Chrome



Code
MLPC021

Size
H 35mm
W 160mm

Finish
Polished Chrome



Code
MLPC042

Size
H 40mm
W 170mm

Finish
Polished Chrome



Code
MLPC040

Size
H 100mm
W 95mm

Finish
Polished Chrome



Code
MLP070

Size
H 150mm
W 50mm

Finish
Polished Chrome



Code
MLR070

Size
H 150mm
W 50mm

Finish
Rose Gold



Code
MLP080

Size
H 150mm
W 40mm
L 200mm

Finish
Chrome



Code
MLPS002

Size
H 45mm
L 230mm

Finish
Polished Chrome



Code
MLPS001

Size
H 38mm
D 220mm

Finish
Polished Chrome

If you have another finish in mind please call us to discuss.



Code
MLP096

Size
H 120mm
W 52mm

Finish
Polished Chrome



Code
MLP202

Size
H 125mm
W 100mm

Finish
Polished Chrome



Code
MLP205

Size
H 45mm
D 60mm

Finish
Polished Chrome

Castors

We have a wide range of castors available from stock, with a variety of other colours and sizes possible as special order items.

BALL CASTOR



Code
BC040
BC050

Size
40mm
50mm

Finish
Beige

Packed in
100/box

BALL CASTOR



Code
BC060

Size
50mm

Finish
Chrome

Packed in
100/box

BALL CASTOR



Code
BC070

Size
50mm

Finish
Polished Gold

Packed in
100/box

BALL CASTOR



Code
BC080

Size
50mm

Fixing
Satin Bronze

Packed in
100/box

CASTOR



Code
CAS030

Size
41mm

Fixing
Gripneck

Packed in
300/box

HEAVY DUTY CASTOR



Code
CAS035

Size
41mm

Fixing
Gripneck

Packed in
300/box

We are able to source other sizes of castor than those shown here if required.

TWIN WHEEL CASTOR



Code
CAS044

Size
40mm

Fixing
M8

Packed in
200/box

BRAKED TWIN WHEEL CASTOR



Code
CAS047

Size
50mm

Fixing
Gripneck

Packed in
150/box

BRAKED TWIN WHEEL CASTOR



Code
CAS048

Size
50mm

Fixing
M8

Packed in
150/box

#3

PCI Pledge

PCI pledge to search far and wide to source the most suitable solution for your need.

SQUARE SOCKET CASTOR



Code
ICA192
ICA201

Size
32mm (1 1/4")
56mm (2 1/4")

Finish
Brass
Brass **NEW**

SQUARE SOCKET CASTOR



Code
ICA197

Size
32mm (1 1/4")

Finish
Chrome

ROUND SOCKET CASTOR



Code
ICA015
ICA030
ICA045
ICA060

Size
25mm (1")
29mm (1 1/8")
32mm (1 1/4")
38mm (1 1/2")

Finish
Brass
Brass
Brass
Brass

ROUND SOCKET CASTOR



Code
ICA033
ICA044

Size
29mm (1 1/8")
32mm (1 1/4")

Finish
Chrome
Chrome

ROUND SOCKET CASTOR



Code
ICA048

Size
32mm (1 1/4")

Finish
Copper

ROUND SOCKET CASTOR



Code
ICA046

Size
32mm (1 1/4")

Finish
Antique

ROUND SOCKET CASTOR



Code
ICA047

Size
32mm (1 1/4")

Finish
Black
Chrome

GRIP NECK CASTOR



Code
ICA135
ICA075
ICA180

Size
25mm (1")
32mm (1 1/4")
38mm (1 1/2")

Finish
Brass
Brass
Brass

GRIP NECK CASTOR



Code
ICA080

Size
32mm (1 1/4")

Finish
Chrome

GRIP NECK CASTOR

Code
ICA076

Size
32mm (1 1/4")

Finish
Antique

SCREW PLATE CASTOR

Code
ICA074
ICA100
ICA105
ICA120

Size
25mm (1")
29mm (1 1/8")
32mm (1 1/4")
38mm (1 1/2")

Finish
Brass
Brass
Brass
Brass

SCREW PLATE CASTOR

Code
ICA110

Size
32mm (1 1/4")

Finish
Chrome

SCREW PLATE CASTOR

Code
ICA106

Size
32mm (1 1/4")

Finish
Antique

CAULDRON CASTOR

Code
ICA321

Size
32mm (1 1/4")

Finish
Chrome

CAULDRON CASTOR

Code
ICA320

Size
32mm (1 1/4")

Finish
Brass

We can supply our Round Socket, Square Socket, Grip Neck & Screw Plate Castors in a variety of other colours.

We also have access to many different sizes and fixings of Twin Wheel Castors.

SQUARE SHALLOW CASTOR



Code ICA160
Size 50mm (2")
Finish Brass

SQUARE SHALLOW CASTOR



Code ICA161
Size 50mm (2")
Finish Chrome

SQUARE SHALLOW CASTOR



Code ICA162
Size 50mm (2")
Finish Antique

SQUARE SHALLOW CASTOR



Code ICA163
Size 50mm (2")
Finish Black Chrome

ROUND SHALLOW CASTOR



Code ICA202
Size 50mm (2")
Finish Brass

ROUND SHALLOW CASTOR



Code ICA203
Size 50mm (2")
Finish Chrome

ROUND SHALLOW CASTOR



Code ICA204
Size 50mm (2")
Finish Antique

ROUND SHALLOW CASTOR



Code ICA205
Size 50mm (2")
Finish Black Chrome

PROFILED SHALLOW CASTOR



Code ICA207
Size 50mm (2")
Finish Black Chrome

ROUND EMBELLISHER



| Code | Size | Finish |
|--------|---------------|--------|
| ICA400 | 25mm (1") | Brass |
| ICA405 | 29mm (1 1/8") | Brass |
| ICA410 | 32mm (1 1/4") | Brass |
| ICA415 | 38mm (1 1/2") | Brass |

ROUND EMBELLISHER



| Code | Size | Finish |
|--------|---------------|--------|
| ICA411 | 32mm (1 1/4") | Chrome |

ROUND EMBELLISHER



| Code | Size | Finish |
|--------|---------------|---------|
| ICA412 | 32mm (1 1/4") | Antique |

SQUARE EMBELLISHER



| Code | Size | Finish |
|--------|---------------|--------|
| ICA420 | 25mm (1") | Brass |
| ICA425 | 29mm (1 1/8") | Brass |
| ICA430 | 32mm (1 1/4") | Brass |
| ICA435 | 38mm (1 1/2") | Brass |

SQUARE EMBELLISHER



| Code | Size | Finish |
|--------|---------------|--------|
| ICA431 | 32mm (1 1/4") | Chrome |

SQUARE EMBELLISHER



| Code | Size | Finish |
|--------|---------------|---------|
| ICA432 | 32mm (1 1/4") | Antique |

Wooden legs can be bespoke designed to fit these caps if required.

32MM LEG CAP



| Code | Size | Finish |
|--------|------|--------|
| ICA712 | 32mm | Brass |
| ICA713 | 32mm | Chrome |

CASTOR CUP



| Code | Size | Finish |
|--------|-----------|--------|
| ICA710 | 50mm (2") | Brass |
| ICA711 | 50mm (2") | Chrome |

Plastic Glides

We have increased the range of options in our glide range to hopefully cover all height requirements you may have. If you require a smaller quantity than listed here please ask as we can still help.

TRIANGULAR PLASTIC FOOT



Code
FL030

Size
15mm H x 70mm L
x 45mm W

Packed in
500/bag

Fixing
Staple

KG30 GLIDE SOLID STEM



Code
FL005

Size
30mm H x 35mm D

Packed in
500/bag

Fixing
Knock In

KG40 GLIDE WITH PIN



Code
FL015

Size
40mm H x 50mm D

Packed in
300/bag

Fixing
Knock In

KG40 GLIDE SOLID STEM



Code
FL016

Size
40mm H x 50mm D

Packed in
300/bag

Fixing
Knock In

SCREW FIX GLIDE



| Code | Size | Packed in |
|-------|-----------------|-----------|
| FL165 | 20mm H x 45mm D | 500/bag |
| FL163 | 35mm H x 45mm D | 300/bag |

SCREW FIX GLIDE



| Code | Size | Packed in |
|-------|-----------------|-----------|
| FL052 | 50mm H x 50mm D | 700/box |

SCREW FIX GLIDE



| Code | Size | Packed in |
|-------|-----------------|-----------|
| FL051 | 60mm H x 60mm D | 380/box |

M8 THREADED GLIDES



| Code | Size | Packed in |
|-------|------------------|-----------|
| FL050 | 80mm H x 55mm D | 150/bag |
| FL056 | 120mm H x 50mm D | 100/bag |

M8 THREADED GLIDES



| Code | Size | Packed in |
|-------|-----------------|-----------|
| FL055 | 35mm H x 40mm D | 300/bag |
| FL054 | 50mm H x 50mm D | 550/box |

M8 THREADED GLIDES



| Code | Size | Packed in |
|--------|------------------|-----------|
| JGS011 | 60mm H x 60mm D | 320/box |
| JGS012 | 80mm H x 60mm D | 250/box |
| JGS013 | 90mm H x 90mm D | 180/box |
| JGS020 | 107mm H x 75mm D | 150/box |

For T-Nuts, D-Nuts and other fixing solutions see **page 80**.

CHROME MUSHROOM GLIDE



| Code | Size |
|-------|-----------------|
| FL060 | 40mm H x 65mm D |

| Packed in | Fixing |
|-----------|-----------|
| 200/box | Grip Neck |

BLACK MUSHROOM GLIDE



| Code | Size |
|-------|-----------------|
| FL061 | 40mm H x 65mm D |

| Packed in | Fixing |
|-----------|-----------|
| 200/box | Grip Neck |

Moulded Legs

QUEEN ANNE LEG SET



| Code | Size | Finish |
|---------------------|------------|----------|
| LEG115 (Front) | 228mm (9") | Mahogany |
| LEG240 (Back Left) | 203mm (8") | Mahogany |
| LEG230 (Back Right) | 203mm (8") | Mahogany |

QUEEN ANNE LEG



| Code | Size | Finish |
|--------|---------------|----------|
| LEG010 | 89mm (3 1/2") | Mahogany |

QUEEN ANNE LEG



| Code | Size | Finish |
|--------|------------|----------|
| LEG020 | 152mm (6") | Mahogany |

QUEEN ANNE LEG



| Code | Size | Finish |
|--------|------------|----------------------|
| LEG030 | 203mm (8") | Mahogany |
| LEG031 | 203mm (8") | Light Oak NEW |
| LEG032 | 203mm (8") | Pewter NEW |

QUEEN ANNE LEG



| Code | Size | Finish |
|--------|------------|----------------------|
| LEG040 | 228mm (9") | Mahogany |
| LEG041 | 228mm (9") | Light Oak NEW |
| LEG042 | 228mm (9") | Pewter NEW |

BALL AND CLAW LEG



| Code | Size | Finish | Fixing |
|--------|------------|-----------|--------|
| LEG061 | 228mm (9") | Light Oak | Bolt |

Floor Protectors

PLASTIC DOMES OF SILENCE



| Code | Size | Colour | Packed in |
|--------|------|--------|-----------|
| DOM027 | 15mm | White | 1000/box |
| DOM040 | 18mm | White | 1000/box |
| DOM250 | 18mm | Brown | 1000/box |
| DOM260 | 22mm | Brown | 1000/box |
| DOM270 | 22mm | White | 1000/box |
| DOM271 | 29mm | Brown | 100/box |
| DOM272 | 29mm | White | 200/box |

FELT DOMES OF SILENCE



| Code | Size | Colour | Packed in |
|--------|------|--------|-----------|
| DOM416 | 20mm | Brown | 100/box |
| DOM417 | 20mm | White | 100/box |
| DOM419 | 24mm | White | 100/box |
| DOM418 | 30mm | White | 100/box |

METAL 3 PRONG DOMES OF SILENCE



| Code | Size | Packed in |
|-------|------|-----------|
| FL079 | 13mm | 500/box |
| FL080 | 15mm | 500/box |
| FL081 | 18mm | 500/box |
| FL082 | 24mm | 500/box |

STEEL CHAIR GLIDE



| Code | Size | Finish |
|--------|-------------|---------|
| DOM430 | 16mm x 16mm | 500/box |

ADHESIVE FELT PADS



| Code | Size | Packed in |
|---------|------|-----------|
| DOM320 | 18mm | 1000/bag |
| DOM3000 | 25mm | 1000/bag |
| DOM305 | 38mm | 1000/bag |
| DOM314 | 50mm | 500/bag |

PTFE DOMES OF SILENCE



| Code | Size | Fixing | Packed in |
|--------|------|---------------|-----------|
| DOM501 | 25mm | Self-Adhesive | 250/bag |
| DOM502 | 25mm | With nail | 1000/bag |

Adhesives

PCI HEAVY DUTY SPRAY ADHESIVE



Code **Packed in**
AER021 500ml Can (12 Cans / Pack)

Description
Heavy Duty adhesive comes in a handy 500ml aerosol, and is an exceptionally powerful, long-lasting, multi purpose adhesive.

PCI NON CHLORINATED ADHESIVE



Code **Packed in**
AER026 500ml Can (12 Cans / Pack)

Description
Contact Non-Chlorinated is part of the latest advance in Halogen-Free adhesive technology. Its high solids, low solvent formula produces a stronger bonding system than conventional general purpose adhesives.

GENERIC SPRAY ADHESIVE



Code **Packed in**
AER020 500ml Can (12 Cans / Pack)

Description
Our Heavy Duty Spray Adhesive is also available in a non-branded can, ideal for customers wishing to sell it as part of their range.

TRIM FIX HIGH TEMP HEAVY DUTY SPRAY ADHESIVE



Code **Packed in**
AER023 500ml Can (12 Cans / Pack)

Description
Trimfix is a multi-purpose, heavy duty adhesive with high temperature resistance, specially formulated for use in the automotive industry.

GLUE CANISTER



Code **Description**
ADH170 17kg (23lbs) Canister of Adhesive Spray

ADH160 13kg (22lbs) Canister of Non Chlorinated Adhesive Spray **NEW**

SPRAY GUN



Code **Description**
ADH175 Spray Gun to suit Glue Canister
ADH176 3.5m hose to suit Glue Canister

Aerosols

PCI SILICONE SPRAY



Code **Packed in**
AER009 500ml Can (12 Cans / Pack)

Description
Silicone Lubricant is a clear, non-staining lubricant.

GENERIC SILICONE SPRAY



Code **Packed in**
AER010 500ml Can (12 Cans / Pack)

Description
Our Silicone Spray is now available in a non-branded can, designed for customers wishing to sell as part of their own range.

NON SILICONE LUBRICANT



Code **Packed in**
AER008 500ml Can (12 Cans / Pack)

Description
This lubricant has been developed as an alternative to silicone spray for use as a mould release, textile machine spray or general purpose lubricant for areas where silicone cannot be tolerated or must not be used.

FABRIC PROTECTOR



Code **Packed in**
AER030 500ml Can (12 Cans / Pack)

Description
Fabric Protector has been specifically designed to provide an invisible spray-on protective coating to all soft furnishing materials such as carpets, curtains or fabrics.

FABRIC CLEANER & STAIN REMOVER



Code **Packed in**
AER040 500ml Can (12 Cans / Pack)

Description
Fabric Cleaner is a spray-on cleaner produced from pure industrial alcohol.

FOAM CARPET & UPHOLSTERY CLEANER

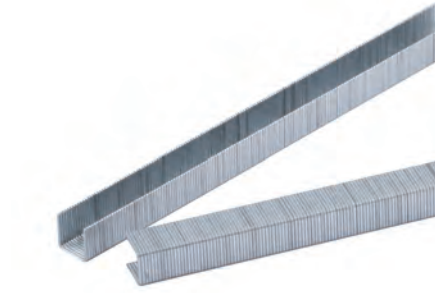


Code **Packed in**
AER050 500ml Can (12 Cans / Pack)

Description
Carpet & Upholstery Cleaner is a water based foaming cleaner specifically designed for use on both delicate surfaces such as carpets, curtains, upholstery and fabrics and harder surfaces such as vinyl, leather, formica and ceramic tiles.

Staples & Nails

PCI UPHOLSTERY STAPLES



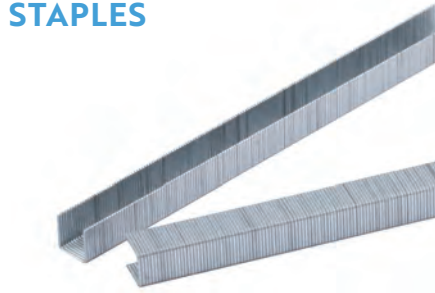
| Code | Size | Packed in |
|--------|-------|-----------|
| UST403 | 71/04 | 20000/box |
| UST405 | 71/06 | 20000/box |
| UST406 | 71/08 | 20000/box |
| UST407 | 71/10 | 20000/box |
| UST408 | 71/12 | 20000/box |
| UST409 | 71/14 | 20000/box |

PCI BLACK UPHOLSTERY STAPLES



| Code | Size | Packed in |
|--------|-------|-----------|
| UST441 | 71/10 | 20000/box |

TACWISE UPHOLSTERY STAPLES



| Code | Size | Packed in |
|--------|-------|-----------|
| UST303 | 71/04 | 20000/box |
| UST304 | 71/05 | 20000/box |
| UST305 | 71/06 | 20000/box |
| UST306 | 71/08 | 20000/box |
| UST307 | 71/10 | 20000/box |
| UST308 | 71/12 | 20000/box |
| UST309 | 71/14 | 10000/box |
| UST310 | 71/16 | 10000/box |

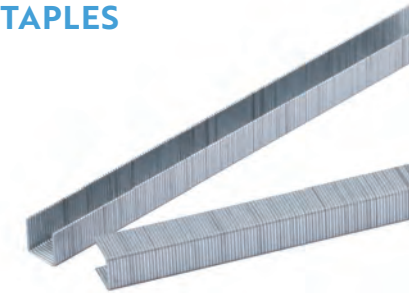
TACWISE BLACK UPHOLSTERY STAPLES



| Code | Size | Packed in |
|--------|-------|-----------|
| UST341 | 71/10 | 20000/box |
| UST342 | 71/12 | 20000/box |
| UST343 | 71/14 | 10000/box |

Stainless steel staples can be sourced upon request.

BEA UPHOLSTERY STAPLES



| Code | Size | Packed in |
|--------|-------|-----------|
| UST379 | 71/10 | 20000/box |
| UST378 | 71/12 | 20000/box |

PCI FRAME STAPLES



| Code | Size | Packed in |
|--------|-------|-----------|
| UST415 | 14/25 | 10000/box |
| UST417 | 14/38 | 10000/box |
| UST418 | 14/45 | 10000/box |

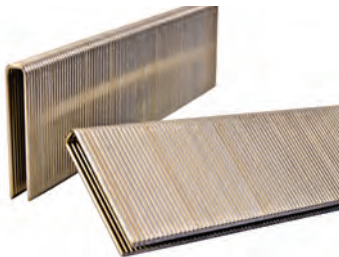
TACWISE FRAME STAPLES



| Code | Size | Packed in |
|--------|-------|-----------|
| UST314 | 14/19 | 15000/box |
| UST315 | 14/25 | 15000/box |
| UST312 | 14/32 | 10000/box |
| UST316 | 14/35 | 10000/box |
| UST317 | 14/38 | 10000/box |
| UST318 | 14/45 | 10000/box |
| UST319 | 14/50 | 10000/box |

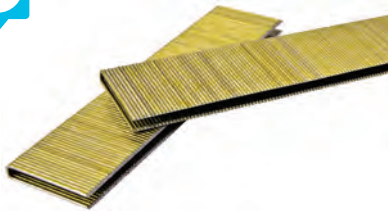
We now stock a compressor for our pneumatic staple guns, check out UST600 and UST601 on **page 93**.

TACWISE 90 SERIES STAPLES



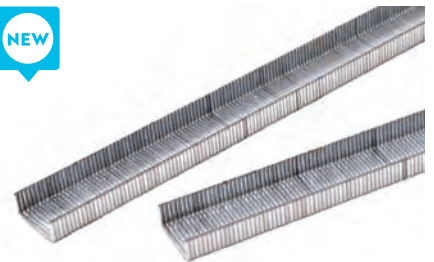
| Code | Size | Packed in |
|--------|-------|-----------|
| UST339 | 90/32 | 5000/box |
| UST338 | 90/40 | 5000/box |

BEA 90 SERIES STAPLES



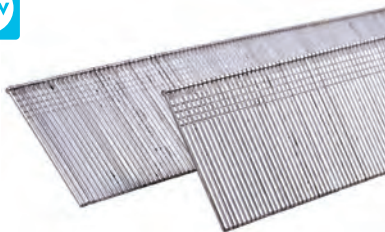
| Code | Size | Packed in |
|--------|-------|-----------|
| UST332 | 90/32 | 3000/box |

BEA 380 STAPLES



| Code | Size | Packed in |
|--------|--------|-----------|
| UST336 | 380/06 | 24000/box |
| UST329 | 380/10 | 18000/box |

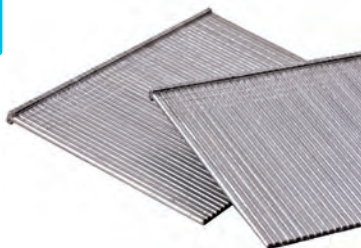
TACWISE 18G BRAD NAILS



| Code | Size | Packed in |
|--------|------------|-----------|
| UST466 | 18g x 32mm | 5000/box |

Description
Light weight nails with a small head used to attach lightweight trim with less visibility.

TACWISE 16G FINISH NAILS



| Code | Size | Packed in |
|--------|------------|-----------|
| UST469 | 16g x 50mm | 2500/box |

Description
Like a Brad Nail with a larger head.

CORRUGATED FASTENER



| Code | Size | Packed in |
|--------|------|-----------|
| UST323 | 9mm | 2000/box |

Staple Guns

71 SERIES TACWISE AUTO STAPLE GUN



Code
UST293

Power
Pneumatic - Long Nose

71 SERIES TACWISE AUTO STAPLE GUN



Code
UST296

Power
Pneumatic - Premium

71 SERIES ELECTRIC TACWISE STAPLE GUN



Code
UST289

Power
Electric

BEA 71 SERIES GUN



Code
UST300

Power
Pneumatic

All pneumatic guns come with a 1 year warranty as standard.

71 SERIES HEAVY DUTY HAND TACKER



Code
UST295

Power
Manual

14 SERIES TACWISE STAPLE GUN



Code
UST291 **Power**
Pneumatic

90 SERIES TACWISE STAPLE GUN



Code
UST285 **Power**
Pneumatic

90 SERIES BEA STAPLE GUN



Code
UST383 **Power**
Pneumatic

BEA 380 STAPLE GUN



Code
UST384 **Power**
Pneumatic

TACWISE BRAD NAIL GUN



Code
UST471 **Power**
Pneumatic

TACWISE FINISH NAIL GUN



Code
UST472 **Power**
Pneumatic

CORRUGATED FASTENER GUN



Code
UST286 **Power**
Pneumatic

We work closely with Tacwise and BEA to stock a wide range of their products.

We have access to their wider range of staples and tools so please contact us on **0113 235 1111** or at **sales@petercookint.com** with any requirements you may have.

Webbing

For our latest catalogue we have increased the range of webbings to offer a greater choice of materials, widths and strengths.

30% SEAT WEBBING



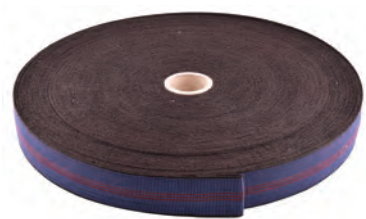
| Code | Width | Roll size |
|--------|-------|-----------|
| WEB052 | 50mm | 100m |

60% SEAT/BACK WEBBING



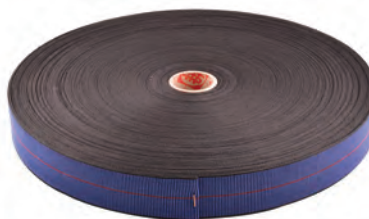
| Code | Width | Roll size |
|--------|-------|-----------|
| WEB058 | 50mm | 100m |
| WEB053 | 70mm | 100m |

70% SEAT/BACK WEBBING



| Code | Width | Roll size |
|--------|-------|-----------|
| WEB051 | 50mm | 100m |
| WEB054 | 70mm | 100m |

100% BACK WEBBING



| Code | Width | Roll size |
|--------|-------|-----------------|
| WEB050 | 50mm | 100m |
| WEB055 | 70mm | 100m NEW |

POLYPROPYLENE WEBBING



| Code | Width | Roll size |
|-------|-----------------|-----------|
| MW011 | 50mm Standard | 250m |
| MW012 | 50mm Heavy Duty | 250m |

AVA POLYPROPYLENE WEBBING



| Code | Width | Roll size |
|-------|-------|-----------|
| MW013 | 50mm | 250m |

We can supply FIRA test certificates for our elastic webbing.

10LB JUTE WEBBING



| Code | Width | Roll size |
|--------|-------|-----------|
| WEB010 | 50mm | 33m |

Description
Used on seats and backs of traditionally upholstered furniture.

12LB JUTE WEBBING



| Code | Width | Roll size |
|--------|-------|-----------|
| WEB011 | 50mm | 33m |

BLACK & WHITE JUTE WEBBING



| Code | Width | Roll size |
|--------|-------|-----------|
| WEB005 | 50mm | 33m |

RUBBER WEBBING



| Code | Width | Roll size |
|----------|-------|---------------------|
| WEB022 | 38mm | 50m NEW |
| WEB020 | 50mm | 50m |
| WEB020/1 | 50mm | Sold p/m NEW |

BLACK RUBBER WEBBING



| Code | Width | Roll size |
|--------|-------|-----------|
| WEB021 | 50mm | 50m |

WEBBING CLIPS



| Code | Size |
|--------|------|
| WEB030 | 51mm |

Zip & Sliders

NUMBER 3 CHAIN ZIP



| Code | Colour | Size | Roll |
|--------|--------|------|------|
| ZCH010 | Beige | No 3 | 200m |
| ZCH020 | Black | No 3 | 200m |
| ZCH040 | White | No 3 | 200m |

NUMBER 5 CHAIN ZIP



| Code | Colour | Size | Roll |
|--------|--------|------|------|
| ZCH601 | Beige | No 5 | 200m |
| ZCH602 | Black | No 5 | 200m |
| ZCH603 | White | No 5 | 200m |

NUMBER 3 SLIDERS



| Code | Colour | Size | Packed in |
|--------|--------|------|-----------|
| SLI010 | Beige | No 3 | 1000/bag |
| SLI030 | Black | No 3 | 1000/bag |
| SLI050 | White | No 3 | 1000/bag |

NUMBER 5 SLIDERS



| Code | Colour | Size | Packed in |
|--------|--------|------|-----------|
| SLI601 | Beige | No 5 | 1000/bag |
| SLI602 | Black | No 5 | 1000/bag |
| SLI603 | White | No 5 | 1000/bag |

NO 5 OPEN ENDED ZIP



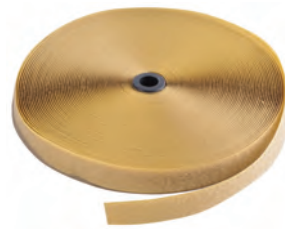
| Code | Size | Colour | Packed in |
|--------|-----------|--------|-----------|
| ZOE030 | 12" 304mm | Beige | 100/bag |
| ZOE050 | 14" 355mm | Beige | 100/bag |
| ZOE070 | 16" 406mm | Beige | 100/bag |
| ZOE090 | 18" 475mm | Beige | 100/bag |
| ZOE110 | 20" 508mm | Beige | 100/bag |
| ZOE130 | 22" 558mm | Beige | 100/bag |
| ZOE150 | 24" 610mm | Beige | 100/bag |
| ZOE170 | 26" 660mm | Beige | 100/bag |
| ZOE190 | 28" 711mm | Beige | 100/bag |
| ZOE210 | 30" 762mm | Beige | 100/bag |

Hook & Loop

Hook and Loop can be supplied as 'sew in' or with a self-adhesive backing to avoid the need for stitching.

To discuss other available colours or widths please contact a member of the Sales Team.

SEW IN HOOK



| Code | Size | Colour | Roll |
|--------|------|--------|------|
| PHL205 | 20mm | Beige | 25m |
| PHL210 | 20mm | Black | 25m |
| PHL200 | 20mm | White | 25m |
| PHL300 | 25mm | Beige | 25m |
| PHL305 | 25mm | Black | 25m |
| PHL310 | 25mm | White | 25m |
| PHL600 | 50mm | Beige | 25m |
| PHL605 | 50mm | Black | 25m |
| PHL615 | 50mm | White | 25m |

SEW IN LOOP



| Code | Size | Colour | Roll |
|--------|------|--------|------|
| PHL206 | 20mm | Beige | 25m |
| PHL211 | 20mm | Black | 25m |
| PHL201 | 20mm | White | 25m |
| PHL301 | 25mm | Beige | 25m |
| PHL306 | 25mm | Black | 25m |
| PHL311 | 25mm | White | 25m |
| PHL601 | 50mm | Beige | 25m |
| PHL606 | 50mm | Black | 25m |
| PHL616 | 50mm | White | 25m |

SELF ADHESIVE HOOK



| Code | Size | Colour | Roll |
|--------|------|--------|------|
| PHL372 | 25mm | Black | 25m |
| PHL374 | 25mm | White | 25m |
| PHL607 | 50mm | Black | 25m |
| PHL617 | 50mm | White | 25m |

SELF ADHESIVE LOOP



| Code | Size | Colour | Roll |
|--------|------|--------|------|
| PHL373 | 25mm | Black | 25m |
| PHL375 | 25mm | White | 25m |
| PHL608 | 50mm | Black | 25m |
| PHL618 | 50mm | White | 25m |

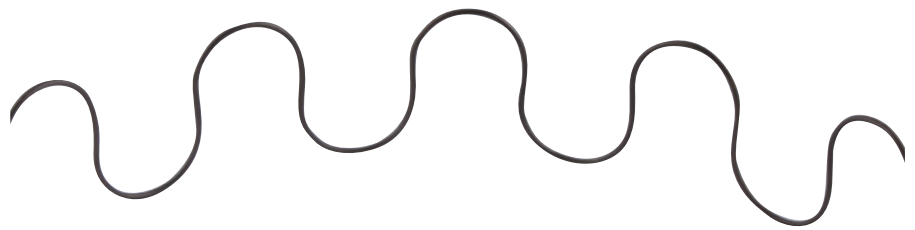
Springs & Clips

9 GAUGE D ARC ZIG ZAG SPRINGS (50 PER BUNDLE)



| Code | Size | Code | Size |
|--------|-------------|--------|------------------------|
| SPR029 | 380mm (15") | SPR040 | 610mm (24") |
| SPR031 | 406mm (16") | SPR041 | 635mm (25") |
| SPR032 | 430mm (17") | SPR050 | 660mm (26") |
| SPR034 | 457mm (18") | SPR051 | 686mm (27") |
| SPR035 | 483mm (19") | SPR055 | 710mm (28") |
| SPR033 | 508mm (20") | SPR056 | 735mm (29") |
| SPR037 | 533mm (21") | SPR057 | 760mm (30") |
| SPR038 | 559mm (22") | SPR089 | 790mm (31") |
| SPR039 | 585mm (23") | SPR088 | 813mm (32") NEW |

11 GAUGE SUPERLOOP SPRINGS (50 PER BUNDLE)



| Code | Size | Code | Size |
|--------|-------------|--------|-------------|
| SPR074 | 406mm (16") | SPR058 | 559mm (22") |
| SPR099 | 457mm (18") | SPR079 | 585mm (23") |
| SPR100 | 483mm (19") | SPR080 | 610mm (24") |
| SPR102 | 508mm (20") | SPR090 | 660mm (26") |
| SPR075 | 533mm (21") | | |

ZIG ZAG ROLL



| Code | Description |
|--------|---|
| SPR011 | 9 gauge x 30m (100ft) Zig Zag Roll - Seat Quality |
| SPR021 | 11 gauge x 30m (100ft) Zig Zag Roll - Seat Quality |

SUPERLOOP ROLL



| Code | Description |
|--------|---|
| SPR030 | 11 gauge x 30m (100ft) Superloop Roll - Back Quality |

SPRUNG SEAT UNITS



| Code | Description |
|--------|-----------------------|
| SPU010 | 1 Seater 48cm x 56cm |
| SPU020 | 2 Seater 107cm x 56cm |
| SPU030 | 3 Seater 145cm x 56cm |

9 GAUGE DOUBLE COIL SPRINGS



| Code | Size |
|--------|-------------|
| SPR110 | 101mm (4") |
| SPR120 | 127mm (5") |
| SPR130 | 152mm (6") |
| SPR140 | 178mm (7") |
| SPR150 | 203mm (8") |
| SPR160 | 229mm (9") |
| SPR162 | 254mm (10") |

SILENTWIRE



| Code | Packed in |
|--------|------------|
| REC312 | 1219m/coil |

Description
Used to stop creaking and add lifespan and durability to zig zag springs.

SPRING CLIPS



| Code | Packed in |
|--------|-----------|
| SPR010 | 5000/Bag |

PLASTIC SPRING CLIPS



| Code | Packed in |
|--------|-----------|
| SPR015 | 1400/bag |

SILENTWIRE CLIPS



| Code | Packed in |
|--------|-----------|
| REC313 | 3600/box |

#4

PCI Pledge

PCI pledge to operate a common-sense approach and be flexible.

Decorative Nails

Our decorative nail strips are a high quality finish which we find consistent, hard wearing and at the same time competitively priced.

BRASS TRIM



| Code | Size | Packed in |
|--------|-------|-------------------|
| NHT020 | 9.6mm | 250m & 6000 nails |
| NHT096 | 16mm | 125m & 2000 nails |

OLD GOLD TRIM



| Code | Size | Packed in |
|--------|-------|-------------------|
| NHT060 | 9.6mm | 250m & 6000 nails |
| NHT095 | 16mm | 125m & 2000 nails |

NICKEL TRIM



| Code | Size | Packed in |
|--------|-------|-------------------|
| NHT063 | 9.6mm | 250m & 6000 nails |
| NHT090 | 16mm | 125m & 2000 nails |
| NHT105 | 20mm | 100m & 1500 nails |

PEWTER TRIM



| Code | Size | Packed in |
|--------|-------|------------------------------|
| NHT070 | 9.6mm | 250m & 6000 nails |
| NHT110 | 16mm | 125m & 2000 nails NEW |

COPPER TRIM



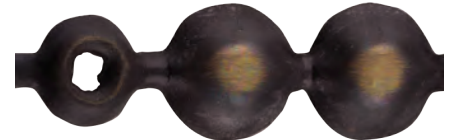
| Code | Size | Packed in |
|--------|-------|-------------------|
| NHT055 | 9.6mm | 250m & 6000 nails |

COPPER RENAISSANCE TRIM



| Code | Size | Packed in |
|--------|-------|-------------------|
| NHT080 | 9.6mm | 250m & 6000 nails |

BRONZE RENAISSANCE TRIM



| Code | Size | Packed in |
|--------|-------|-------------------|
| NHT040 | 9.6mm | 250m & 6000 nails |
| NHT091 | 16mm | 125m & 2000 nails |
| NHT106 | 20mm | 100m & 1500 nails |

ANTIQUE BLACK TRIM



| Code | Size | Packed in |
|--------|-------|-------------------|
| NHT042 | 9.6mm | 250m & 6000 nails |
| NHT098 | 16mm | 125m & 2000 nails |

We can source other finishes of nail strip such as antique, honeycomb, pyramid style and much more.

Contact the Sales Team to discuss this option further **0113 235 1111** or sales@petercookint.com

TOPAZ TRIM



| Code | Size | Packed in |
|--------|-------|-------------------|
| NHT076 | 9.6mm | 250m & 6000 nails |

EMERALD TRIM



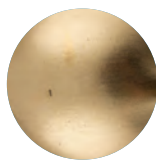
| Code | Size | Packed in |
|--------|-------|-------------------|
| NHT074 | 9.6mm | 250m & 6000 nails |

AMETHYST TRIM



| Code | Size | Packed in |
|--------|-------|-------------------|
| NHT072 | 9.6mm | 250m & 6000 nails |

BRASS NAILS



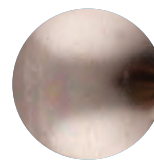
| Code | Size | Packed in |
|--------|--------|-----------|
| NHT010 | 9.6mm | 1000/box |
| NHT170 | 10.5mm | 1000/box |
| NHT097 | 16mm | 1000/box |
| NHT140 | 20mm | 250/box |

OLD GOLD NAILS



| Code | Size | Packed in |
|--------|-------|--------------------|
| NHT050 | 9.6mm | 1000/box |
| NHT094 | 16mm | 1000/box |
| NHT160 | 20mm | 175/box NEW |

NICKEL NAILS



| Code | Size | Packed in |
|--------|--------|----------------------|
| NHT064 | 9.6mm | 1000/box |
| NHT145 | 10.5mm | 1000/box |
| NHT224 | 10.5mm | 25000/box NEW |
| NHT089 | 16mm | 1000/box |
| NHT142 | 19mm | 250/box |
| NHT104 | 20mm | 500/bag |
| NHT143 | 24mm | 250/bag |

PEWTER NAILS



| Code | Size | Packed in |
|--------|--------|---------------------|
| NHT071 | 9.6mm | 1000/box |
| NHT121 | 10.5mm | 1000/box |
| NHT111 | 16mm | 1000/box NEW |
| NHT137 | 19mm | 250/box NEW |

COPPER NAILS



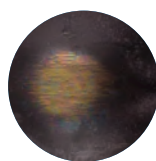
| Code | Size | Packed in |
|--------|-------|---------------------|
| NHT056 | 9.6mm | 1000/box |
| NHT113 | 16mm | 1000/box NEW |

COPPER RENAISSANCE NAILS



| Code | Size | Packed in |
|--------|-------|-----------|
| NHT081 | 9.6mm | 1000/box |

BRONZE RENAISSANCE NAILS



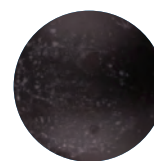
| Code | Size | Packed in |
|--------|--------|----------------------|
| NHT030 | 9.6mm | 1000/box |
| NHT120 | 10.5mm | 1000/box |
| NHT225 | 10.5mm | 25000/box NEW |
| NHT092 | 16mm | 1000/box |
| NHT107 | 20mm | 500/bag |
| NHT168 | 24mm | 250/bag |

ANTIQUE NAILS



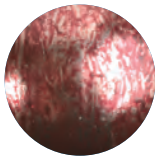
| Code | Size | Packed in |
|--------|--------|-----------|
| NHT220 | 10.5mm | 1000/box |
| NHT305 | 19mm | 250/box |

ANTIQUE BLACK NAILS



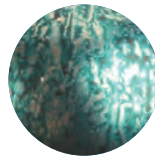
| Code | Size | Packed in |
|--------|-------|-----------|
| NHT043 | 9.6mm | 1000/box |
| NHT099 | 16mm | 1000/box |

TOPAZ NAILS



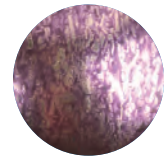
Code
NHT077 **Size**
9.6mm **Packed in**
1000/box

EMERALD NAILS



Code
NHT075 **Size**
9.6mm **Packed in**
1000/box

AMETHYST NAILS



Code
NHT073 **Size**
9.6mm **Packed in**
1000/box

DAISY LOW DOME NAILS



Code
NHT306 **Size**
12mm **Packed in**
500/box

BRONZE PYRAMID NAILS



Code
NHT169 **Size**
19mm **Packed in**
250/box

NICKEL PYRAMID NAILS



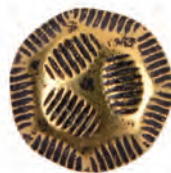
Code
NHT171 **Size**
19mm **Packed in**
250/box

ASTER FILLED NAILS



Code
NHT308 **Size**
11mm **Packed in**
500/box

OXFORD FILLED NAILS



Code
NHT309 **Size**
11mm **Packed in**
500/box

Powder coated nails can be ordered as a special item if required.

Tacking Strip

For tight or compound curves, we offer "Flexcurve" or "Speciale" plus metal tacking strips where it is not possible to use a staple fix strip.

CARD TACKING ROLL



| Code | Size | Packed in |
|-------|-------------|-----------|
| TS010 | 13mm (1/2") | 137m/roll |
| TS011 | 17mm (3/4") | 137m/roll |

Description

Cardboard tack strip is used with tacks or staples to a clean straight line giving a neat and professional upholstery finish.

CARD TACKING STRIPS



| Code | Size | Packed in |
|-------|---------------|-------------|
| TS300 | 12mm x 1000mm | 1000/bundle |
| TS305 | 25mm x 1000mm | 500/bundle |
| TS310 | 50mm x 1000mm | 250/bundle |

CARD TACKING STRIPS WITH NAILS



| Code | Size | Packed in |
|-------|------------|-----------|
| TS107 | 76cm (30") | 381m/box |

PLASTIC FLAT TACK STRIP



| Code | Size | Packed in |
|-------|------|-----------|
| TS130 | 10mm | 500m/coil |

Description

A plastic version of our Card Tacking Roll.

We've recently resourced some of our tackstrip to offer continued low prices.

R2 FLEX-CURVE



Code TSI40
Packed in 30m coil

Description
Bends and flexes in all directions and can be used for straight applications. It holds the fabric smoother than hand sewing.

STI SPECIALE



Code TSI50
Size 1.5m lengths
Packed in 400m/box

Description
Fix with staples to create a blind seam. Bends around curves and corners where slip stitching would be used.

METAL TACKING STRIPS



Code TS427
Size 69cm (27")
Packed in 200/box
TS430 76cm (30") 200/box
TS436 91cm (36") 200/box **NEW**

FOAM BACKED METAL TACKING STRIPS



Code TS210
Size 69cm (27")
Packed in 500/box
TS215 76cm (30") 500/box

PLASTIC COATED METAL TACKING STRIPS



Code TS090
Size 48cm (19")
Packed in 200/box
TS091 61cm(24") 200/box
TS093 69cm (27") 200/box
TS094 76cm (30") 200/box

We can produce our card tacking strips in bespoke sizes and grades here in the UK subject to a minimum order quantity. We are also happy to discuss other sizes in our metal tacking strip range which would be available on a longer lead time.

Piping Cord

PAPER PIPING CORD



| Code | Size | Roll size |
|-------|--------------|-----------|
| PC010 | 4mm (5/32) | 500m/roll |
| PC020 | 5mm (6/32) | 300m/roll |
| PC030 | 6mm (7/32) | 250m/roll |
| PC040 | 7mm (8/32) | 200m/roll |
| PC050 | 9mm (12/32) | 100m/roll |
| PC066 | 19mm (24/32) | 100m/roll |
| PC080 | 25mm (1") | 50m/roll |
| PC090 | 38mm (1½") | 25m/roll |

WASHABLE PIPING CORD



| Code | Size | Roll size |
|--------|------|-----------|
| TEX003 | 3mm | 600m/roll |
| TEX004 | 4mm | 500m/roll |
| TEX005 | 5mm | 350m/roll |
| TEX006 | 6mm | 250m/roll |
| TEX008 | 8mm | 140m/roll |
| TEX010 | 10mm | 80m/roll |

UNBLEACHED COTTON PIPING CORD



| Code | Size | Roll size |
|-------|-----------|------------|
| PC270 | 5mm No.10 | 1kg spools |
| PC280 | 6mm No.12 | 1kg spools |

PLASTIC PVC PIPING CORD



| Code | Size | Roll size |
|---------|------|-----------|
| BUS4610 | 3mm | 250m/roll |
| BUS4630 | 4mm | 250m/roll |
| BUS4650 | 5mm | 250m/roll |

POLYFOAM PIPING CORD



| Code | Size | Roll size | Available |
|-------|------|------------|-----------|
| PC170 | 10mm | 1100m/reel | |
| PC175 | 12mm | 900m/reel | 96hr |
| PC180 | 15mm | 500m/reel | 96hr |
| PC190 | 20mm | 300m/reel | 96hr |

Washable piping cord is ideal for use in removable cushions covers

Edge Roll

FLANGED PAPER EDGE ROLL



| Code | Size | Roll size |
|-------|--------|-----------|
| ER010 | 12.5mm | 100m/roll |
| ER020 | 19mm | 100m/roll |
| ER030 | 25mm | 50m/roll |

FLANGED POLYFOAM EDGE ROLL



| Code | Size | Roll size |
|-------|--------|-----------|
| ER040 | 12.5mm | 450m/box |
| ER050 | 19mm | 300m/roll |
| ER060 | 25mm | 180m/roll |
| ER070 | 32mm | 180m/roll |

PLASTIC EDGE ROLL



| Code | Size | Colour | Roll size |
|-------|------|--------|----------------------|
| ER140 | 5mm | Black | 250m/roll NEW |
| ER141 | 9mm | Beige | 100m/roll |
| ER137 | 14mm | Beige | 100m/roll |

BLIND SEAM PROFILE



| Code | Size | Roll size |
|--------|------|-----------|
| GEX131 | 5mm | 175m/roll |

Description

Used to conceal a seam on fixed upholstery work. Also known as "Double Piping Cord".

Our plastic edge rolls can be supplied in different colours and sizes subject to a minimum order requirement. Feel free to discuss your requirements with the Sales Team on 0113 235 1111.

Base Cloth

15G SPUN BONDED POLYPROP



| Code | Width | Colour | Roll Size |
|--------|-------|--------|-----------|
| NWB604 | 160cm | White | 1000m |

COMPLIES WITH BS5852 SCHEDULE 4 PART 2 AND SCHEDULE 5 PART 3

60G SPUN BONDED POLYPROP



| Code | Width | Colour | Roll Size |
|--------|-------|--------|-----------|
| NWB605 | 152cm | White | 125m |

COMPLIES WITH BS5852 SCHEDULE 4 PART 2 AND SCHEDULE 5 PART 3

70G SPUN BONDED POLYPROP



| Code | Width | Colour | Roll Size |
|--------|-------|--------|-----------|
| NWB690 | 76cm | Black | 100m |
| NWB691 | 92cm | Black | 100m |
| NWB609 | 100cm | Black | 100m |
| NWB613 | 138cm | Black | 100m |
| NWB615 | 152cm | Black | 100m |
| NWB616 | 152cm | Grey | 100m |

COMPLIES WITH BS5852 SCHEDULE 4 PART 2 AND SCHEDULE 5 PART 3

90G SPUN BONDED POLYPROP



| Code | Width | Colour | Roll Size |
|--------|-------|--------|-----------|
| NWB630 | 152cm | Black | 100m |
| NWB631 | 152cm | White | 100m |
| NWB636 | 152cm | Beige | 100m |

COMPLIES WITH BS5852 SCHEDULE 4 PART 2 AND SCHEDULE 5 PART 3

FLEECE LINED POLYPROP



| Code | Width | Roll Size |
|-------|-------|-----------|
| MW015 | 84cm | 500m/roll |
| MW019 | 102cm | 500m/roll |

Description

Suitable for bases of suites and divans etc. This is an economical modern alternative for bottoming your upholstered chairs. Also used to cover springs to protect the frame and base before applying linings and fabrics.

WOVEN POLYPROP



| Code | Width | Roll Size |
|--------|-------|----------------------|
| PBC021 | 70cm | 500m/roll NEW |
| PBC031 | 100cm | 500m/roll |

COMPLIES WITH BS5852 SCHEDULE 4 PART 2 AND SCHEDULE 5 PART 3

Platform Cloth

For current fire test certificates of any of the fabrics, foams or fillings shown please contact us at sales@petercookint.com

HESSIAN



| Code | Width | Weight | Roll Size |
|--------|-------|--------|-----------|
| HES010 | 102cm | 9oz | 100m/roll |
| HES062 | 114cm | 9oz | 100m/roll |
| HES030 | 183cm | 6oz | 50m/roll |
| HES040 | 183cm | 9oz | 50m/roll |
| HES050 | 183cm | 12oz | 50m/roll |

FR HESSIAN



| Code | Width | Weight | Roll Size |
|--------|-------|--------|-----------|
| HES080 | 102cm | 10oz | 100m/roll |

COMPLIES WITH BS5852 SCHEDULE 4 PART 2 AND SCHEDULE 5 PART 3

100G NEEDLE PUNCH



| Code | Width | Colour | Roll Size |
|--------|-------|--------|-----------|
| CLO414 | 137cm | Black | 120m/roll |

COMPLIES WITH BS5852 SCHEDULE 4 PART 2 AND SCHEDULE 5 PART 3

Description

An economical multi-purpose lining/base cloth.

125G NEEDLE PUNCH



| Code | Width | Colour | Roll Size |
|--------|-------|--------|-----------|
| CLO410 | 152cm | Brown | 120m/roll |
| CLO415 | 139cm | Black | 200m/roll |
| CLO416 | 152cm | Black | 150m/roll |

COMPLIES WITH BS5852 SCHEDULE 4 PART 2 AND SCHEDULE 5 PART 3

Lining Cloth

POLY COTTON LINING CLOTH



| Code | Width | Colour | Roll Size |
|--------|-------|--------|-----------|
| CLO200 | 137cm | Brown | 100m/roll |
| CLO212 | 152cm | Brown | 100m/roll |
| CLO205 | 137cm | Black | 100m/roll |
| CLO213 | 152cm | Black | 100m/roll |
| CLO210 | 137cm | Beige | 100m/roll |
| CLO211 | 152cm | Beige | 100m/roll |

COMPLIES WITH BS5852 SCHEDULE 4 PART 2 AND SCHEDULE 5 PART 3

HOOK & LOOP RECEPTIVE LINING CLOTH



| Code | Width | Colour | Roll Size |
|--------|-------|----------|-----------|
| CLO703 | 152cm | Beige | 100m/roll |
| CLO704 | 152cm | Mid Grey | 100m/roll |
| CLO705 | 152cm | Black | 100m/roll |

COMPLIES WITH BS5852 SCHEDULE 4 PART 2 AND SCHEDULE 5 PART 3

UNDYED CALICO



| Code | Width | Roll Size |
|--------|-------|-----------|
| CAL061 | 137cm | 100m/roll |
| CAL062 | 152cm | 100m/roll |

COMPLIES WITH BS5852 SCHEDULE 4 PART 2 AND SCHEDULE 5 PART 3

Description

Used to line upholstery. Helps to keep the dust out of padding and prolong the life of the upholstery. Also gives a better finish to the product.

All of these items are available to buy in cut lengths if required.

POLYESTER LINING CLOTH



| Code | Width | Colour | Roll Size |
|--------|-------|--------|-----------|
| CLO560 | 137cm | Beige | 150m/roll |
| CLO565 | 137cm | Brown | 150m/roll |
| CLO566 | 137cm | Black | 150m/roll |

COMPLIES WITH BS5852 SCHEDULE 4 PART 2 AND SCHEDULE 5 PART 3

DRY CLEAN CAMBRIC



| Code | Width | Roll Size |
|--------|-------|-----------|
| CAM025 | 152cm | 100m/roll |

COMPLIES WITH BS5852 SCHEDULE 4 PART 2 AND SCHEDULE 5 PART 3

Description

Cambric is a type of finely woven cotton cloth which is "calendared" to create a glossy, stiff appearance.

Crib 5 Lining

We now stock our schedule
3 crib 5 barrier cloth
in black as well as the
traditional natural colour.

BARRIER CLOTH



Code CLO802 **Width** 152cm **Roll Size** 50m/roll

COMPLIES WITH BS5852 PART 2
IGNITION SOURCE 5

BLACK BARRIER CLOTH



Code CLO250 **Width** 152cm **Roll Size** 50m/roll

COMPLIES WITH BS5852 PART 2
IGNITION SOURCE 5

WOOL SAFE



Code FEL188 **Width** 137cm **Roll Size** 30m/roll

COMPLIES WITH BS5852 PART 2
IGNITION SOURCE 5

All of our fabrics,
foams and fibres
have passed
the relevant fire
retardancy test.

Fibres & Felts

Polyester wadding can be pre-cut in custom sized strips, ideal for fluting on chairs. Contact the Sales Team if you wish to discuss this requirement further.

69CM (27") POLYESTER WADDING



| Code | Size | Roll Size |
|-------------|--------------------|------------------|
| DAC010 | 70g (2oz) x 10mm | 50m/roll |
| DAC040 | 135g (4oz) x 15mm | 40m/roll |
| DAC070 | 200g (6oz) x 20mm | 20m/roll |
| DAC092 | 235g (7oz) x 20mm | 20m/roll |
| DAC107 | 300g (9oz) x 30mm | 20m/roll |
| DAC110 | 475g (14oz) x 47mm | 10m/roll |

COMPLIES WITH BS5852 SCHEDULE 2 PART 1

91CM (36") POLYESTER WADDING



| Code | Size | Roll Size |
|-------------|-------------------|------------------|
| DAC020 | 70g (2oz) x 10mm | 50m/roll |
| DAC050 | 135g (4oz) x 15mm | 40m/roll |
| DAC080 | 200g (6oz) x 20mm | 20m/roll |
| DAC108 | 300g (9oz) x 30mm | 30m/roll |

COMPLIES WITH BS5852 SCHEDULE 2 PART 1

137CM (54") POLYESTER WADDING



| Code | Size | Roll Size |
|-------------|--------------------|------------------|
| DAC030 | 70g (2oz) x 10mm | 50m/roll |
| DAC060 | 135g (4oz) x 15mm | 40m/roll |
| DAC090 | 200g (6oz) x 20mm | 20m/roll |
| DAC091 | 235g (7oz) x 20mm | 20m/roll |
| DAC109 | 300g (9oz) x 30mm | 20m/roll |
| DAC130 | 475g (14oz) x 47mm | 10m/roll |

COMPLIES WITH BS5852 SCHEDULE 2 PART 1

CARDED FIBRE



| Code | Description | Packed in |
|-------------|--------------------|------------------|
| DAC201 | Carded Fibre | 10kg/bag |

COMPLIES WITH BS5852 SCHEDULE 2 PART 1

400G SPRING INSULATOR

| Code | Width | Roll Size |
|--------|--------------|-----------|
| DAC400 | 15mm x 101cm | 25m/roll |
| DAC405 | 15mm x 69cm | 25m/roll |
| DAC420 | 15mm x 10cm | 30m/roll |

COMPLIES WITH BS5852 SCHEDULE 2 PART 1

WHITE WOOL/ COTTON FELT

| Code | Width | Weight | Roll Size |
|--------|-------|--------|-----------|
| FEL020 | 69cm | 750g | 15m/roll |
| FEL021 | 69cm | 550g | 15m/roll |

COMPLIES WITH BS5852 SCHEDULE 2 PART 1

69CM BLACK WOOL FELT

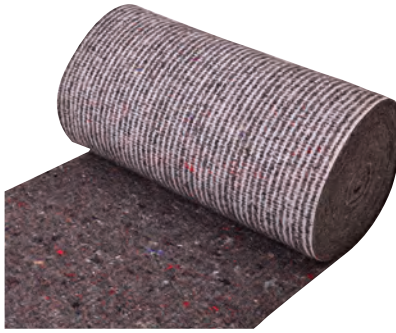
| Code | Width | Roll Size |
|--------|-------|-----------|
| FEL015 | 69cm | 10m/roll |

COMPLIES WITH BS5852 SCHEDULE 2 PART 1

SUPER SKIN WADDING

| Code | Width | Roll Size |
|--------|-------|-----------|
| FEL030 | 91cm | 10m |

COMPLIES WITH BS5852 SCHEDULE 2 PART 1

900G FELTEX

| Code | Width | Roll Size |
|--------|-------|-----------|
| FEL055 | 69cm | 23m/roll |
| FEL056 | 91cm | 23m/roll |

COMPLIES WITH BS5852 SCHEDULE 2 PART 1

750G FELTEX

| Code | Width | Roll Size |
|--------|-------|-----------|
| FEL600 | 69cm | 15m/roll |

COMPLIES WITH BS5852 SCHEDULE 2 PART 1

#5 PCI Pledge
 PCI pledge to go the extra mile, even when it may not be expected.

Coir & Fillings

WHITE FEATHERS



| Code | Description |
|--------|----------------------------|
| FEL151 | Tripled Washed, 4-6cm Size |

Packed in
12.5kg/bag

COMPLIES WITH BS5852 SCHEDULE 2 PART 1

LOOSE HAIR



| Code | Description |
|--------|-------------|
| FEL130 | 80/20 Mix |

Packed in
10kg/box

COMPLIES WITH BS5852 SCHEDULE 2 PART 1

BLACK COIR FIBRE



| Code | Description | Packed In |
|--------|---------------------------------|-----------|
| FEL100 | FR1 Treated Black Coir Fibre | 10kg/bag |

COMPLIES WITH BS5852 SCHEDULE 2 PART 1

GINGER COIR FIBRE



| Code | Description | Packed In |
|--------|----------------------------------|-----------|
| FEL110 | FR1 Treated Ginger Coir Fibre | 10kg/bag |

COMPLIES WITH BS5852 SCHEDULE 2 PART 1

GINGER COIR FIBRE ROLLS



| Code | Width | Packed In |
|--------|-------|-----------|
| FEL007 | 48cm | 15m roll |
| FEL008 | 61cm | 15m roll |

COMPLIES WITH BS5852 SCHEDULE 2 PART 1

RUBBER HAIR SHEETS



| Code | Description |
|--------|--|
| FEL121 | 182cm x 91cm x 2.5cm (72" x 36" x 1") |
| FEL122 | 182cm x 91cm x 5cm (72" x 36" x 2") |

COMPLIES WITH BS5852 SCHEDULE 2 PART 1

Interior Products

INTERLINER



| Code | Width | Roll Size |
|--------|------------|-----------|
| INT685 | 101mm (4") | 50m roll |
| INT686 | 127mm (5") | 50m roll |
| INT682 | 152mm (6") | 50m roll |
| INT681 | 178mm (7") | 50m roll |

Description

Also known as "Buckram" or "Skirt Stiffener".

ANTI SLIP CLOTH



| Code | Width | Colour | Roll Size |
|--------|-------|--------|-----------|
| CLO361 | 60cm | Beige | 30m/roll |
| CLO380 | 80cm | Beige | 30m/roll |
| CLO351 | 60cm | White | 30m/roll |

Description

Durable and soft to allow stitching into other fabrics to enable less slipping between cushions and furniture themselves. Also heavily used in bedding industry in between the base and mattress to reduce movement on mattress itself.

CARDBOARD

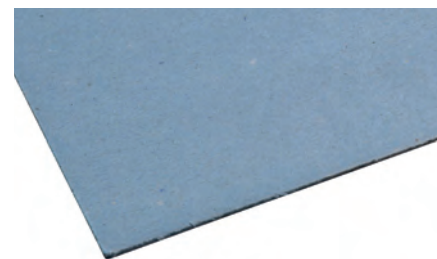


| Code | Description | Size |
|--------|-------------|--------------|
| FBB040 | 1350 Micron | 1000 x 800mm |

Description

A versatile product which can be used as "Arm Card" and templates.

FIBREBOARD



| Code | Description | Size |
|--------|-------------|---------------|
| FBB110 | 1500 Micron | 1235 x 1000mm |
| FBB120 | 3000 Micron | 1235 x 1000mm |

Description

Used for arms, stencilling, pattern making, profile sheet. More heavy duty version of FBB040.

Both fibreboard and cardboard can be produced in specific sheet sizes and micron depending on your requirements. We also can supply both our cardboard and fibreboard to the FSC® standard if required.

Button Parts

BUTTON TOPS



| Code | Size | Packed in |
|--------|-------------|---------------------|
| BUT160 | No 24 Alloy | 1000/bag |
| BUT170 | No 28 Alloy | 1000/bag |
| BUT175 | No 30 Alloy | 1000/bag |
| BUT176 | No 30 Steel | 1000/bag NEW |
| BUT185 | No 36 Alloy | 1000/bag |

WIRE EYE BACKS AND SHELLS



| Code | Size | Packed in | Available |
|--------|-------|-----------|-----------|
| BUT191 | No 45 | 720/set | 72hr |
| BUT192 | No 45 | 144/set | 72hr |
| BUT193 | No 60 | 144/set | 72hr |
| BUT194 | No 60 | 720/set | 72hr |

WIRE LOOP BACK BUTTONS



| Code | Size | Packed in |
|--------|-------|-----------|
| BUT010 | No 24 | 1000/bag |
| BUT012 | No 28 | 1000/bag |
| BUT014 | No 30 | 1000/bag |
| BUT020 | No 36 | 1000/bag |

SERRATED NAIL BACK BUTTONS



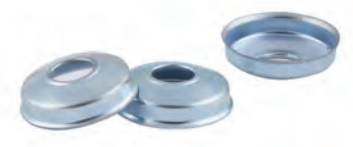
| Code | Size | Packed in |
|--------|------------|---------------------|
| BUT151 | 17mm No 28 | 1000/box |
| BUT142 | 11mm No 30 | 1000/box |
| BUT155 | 17mm No 30 | 1000/box |
| BUT146 | 25mm No 30 | 1000/box NEW |

PRONG BACK BUTTONS



| Code | Size | Packed in |
|--------|------------|-----------|
| BUT044 | 50mm No 28 | 1000/bag |
| BUT046 | 50mm No 30 | 1000/bag |
| BUT045 | 58mm No 30 | 1000/bag |

TAPE BACK BUTTONS



| Code | Size | Packed in |
|--------|-------|-----------|
| BUT130 | No 30 | 1000/bag |
| BUT135 | No 36 | 1000/bag |

BUTTON TAPES



| Code | Size | Packed in |
|--------|-----------|-----------|
| BUT250 | 50mm L/S | 1000/bag |
| BUT260 | 75mm L/S | 1000/bag |
| BUT269 | 100mm L/S | 1000/bag |
| BUT277 | 125mm L/S | 1000/bag |

BUTTON LOOPS



| Code | Size | Packed in |
|--------|------|-----------|
| BUT215 | 40mm | 1000/bag |
| BUT232 | 80mm | 1000/bag |

CARDBOARD WASHER



| Code | Size |
|--------|-----------------------------|
| UST951 | Diameter 35mm with 8mm Hole |

Packed In
2000/box

HAND LEVER PRESS BUTTON MACHINE



| Code | Description |
|--------|---|
| BUT705 | Button machine (Die set and cutter sold separately) |

LEVER PRESS DIE SET AND CUTTER SET FOR BUT705



| Code | Size | Available |
|--------|---------------------|-----------|
| BUT600 | Size 24 Medium | 96hr |
| BUT601 | Size 28 Medium | 96hr |
| BUT615 | Size 30 Medium | |
| BUT625 | Size 36 Medium | 96hr |
| BUT630 | Size 45 Medium | 96hr |
| BUT632 | Size 60 Medium | 96hr |
| BUT616 | Size 30 Heavyweight | 96hr |
| BUT626 | Size 36 Heavyweight | 96hr |
| BUT633 | Size 60 Heavyweight | 96hr |

LEVER PRESS SHORT CUTTER



| Code | Size |
|--------|--------|
| BUT575 | No. 30 |
| BUT585 | No. 36 |

PNEUMATIC BUTTON PRESS MACHINE



| Code |
|--------|
| BUT700 |

Description
Operates with 60-120lbs of compressed air, controlled with a foot pedal. Ideal for high volume production of buttons, around 2-3 times faster production than a hand lever press machine.

PNEUMATIC BUTTON HAMMER



| Code |
|--------|
| BUT715 |

Description
Comes with 2 fittings, used to assemble buttons parts together.

No. 24 = 15mm
 No. 28 = 17mm
 No. 30 = 19mm
 No. 36 = 23mm
 No. 45 = 28mm
 No. 60 = 38mm

Labels & Tags

DL6



Code
DL6

Description
Red Swing
Ticket Labels

Packed in
1000/pack

DL7



Code
DL7

Description
Green Swing
Ticket Labels

Packed in
1000/pack

DL8



Code
DL8

Description
Crib 5 - BS7176
Medium Hazard Label

Packed in
1500/pack

DL9



Code
DL9

Description
Crib 5 - BS7177
Medium Hazard Label

Packed in
1000/pack

DL5



Code
DL5

Description
BS7177
Low Hazard Label

Packed in
2000/pack

We can produce
bespoke labels
with a low
minimum order
quantity.

SEW IN FABRIC LABEL DOES NOT INCLUDE



| | | |
|-------------|--------------------|------------------|
| Code | Description | Packed in |
| DL21 | 95 x 50mm | 1000/roll |

SEW IN FABRIC LABEL DOES NOT INCLUDE



| | | |
|-------------|-------------------------------|------------------|
| Code | Description | Packed in |
| DL30 | 95 x 50mm Individually Cut | 1000/box |

SEW IN FABRIC LABEL DOES INCLUDE



| | | |
|-------------|--------------------|------------------|
| Code | Description | Packed in |
| DL22 | 95 x 50mm | 1000/roll |

Contact us if you are interested in increasing your branding through your own labels.

UNION JACK SWING TICKET LABEL



| | |
|-------------|------------------|
| Code | Packed in |
| DL55 | 1000/box |

UNION JACK SEW IN LABEL



| | |
|-------------|------------------|
| Code | Packed in |
| DL56 | 1000/box |

TAG GUN



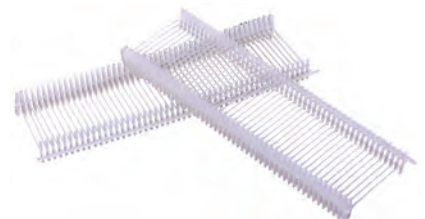
| | |
|-------------|--------------------|
| Code | Description |
| UST500 | Tag Gun |

TAG GUN NEEDLES



| | |
|-------------|------------------|
| Code | Packed in |
| UST501 | 5/pack |

TAG TAILS



| | |
|------------------|--------------------|
| Code | Description |
| UST505 | 13mm Tag Tail |
| UST515 | 25mm Tag Tail |
| Packed in | |
| 5000/box | |

Sewing Sundries

M36 THREAD LIGHT



| Code | Size | Colour |
|--------|-------|----------------------|
| THR110 | 4000m | White |
| THR140 | 4000m | Natural (unbleached) |
| THR041 | 4000m | Grey |

M36 THREAD RED



| Code | Size | Colour |
|--------|-------|-----------|
| THR045 | 4000m | Flame Red |
| THR121 | 4000m | Burgundy |
| THR033 | 4000m | Rust |

M36 THREAD GREEN



| Code | Size | Colour |
|--------|-------|--------|
| THR130 | 4000m | Bottle |
| THR029 | 4000m | Green |

M36 THREAD BLUE



| Code | Size | Colour |
|--------|-------|----------------------|
| THR028 | 4000m | Purple |
| THR004 | 4000m | Mid Blue |
| THR024 | 4000m | Dark Navy NEW |

M36 THREAD BEIGE



| Code | Size | Colour |
|--------|-------|-------------|
| THR040 | 4000m | Dark Beige |
| THR030 | 4000m | Light Beige |
| THR014 | 4000m | Yellow |

M36 THREAD DARK



| Code | Size | Colour |
|--------|-------|-------------|
| THR018 | 4000m | Light Brown |
| THR034 | 4000m | Dark Brown |
| THR010 | 4000m | Black |

M40 BONDED NYLON THREAD



| Code | Size | Colour |
|--------|-------|----------------------|
| THR231 | 5000m | White |
| THR234 | 5000m | Black |
| THR243 | 5000m | Beige |
| THR244 | 5000m | Dark Brown |
| THR681 | 5000m | Natural (unbleached) |

M60 BONDED NYLON THREAD



| Code | Size | Colour |
|--------|-------|--------|
| THR237 | 8000m | Black |
| THR239 | 8000m | Beige |

M75 OVERLOCKING THREAD



| Code | Size | Colour |
|--------|--------|----------------------|
| THR145 | 7500m | White |
| THR155 | 7500m | Black |
| THR175 | 7500m | Beige |
| THR150 | 7500m | Natural (unbleached) |
| THR804 | 20000m | Natural (unbleached) |

250 DENIER MONO FILAMENT



| Code | Packed in |
|--------|-------------------|
| THR721 | 227g Cone (8200m) |

Description

Known as "Invisible Thread". Strong, very thin material which can withstand a high amount of pressure, commonly used on office furniture or furniture that encounters sustained usage.

FLAX TWINE



| Code | Description | Packed in |
|--------|---------------|------------------|
| TWI020 | Standard | 500g Ball (80m) |
| TWI060 | Thin Polished | 250g Ball (300m) |

Description

Strong & flexible. Mainly used by upholsterers to tie springs, an alternative to Silent wire.

SISAL STRING



| Code | Packed in |
|--------|-------------------|
| TWI070 | 2.5kg Ball (450m) |

Description

This is a very traditional 3 ply natural fibre twine, its hairy and rough properties are popular for traditional upholstery.

NYLON BUTTON TWINE



| Code | Packed in |
|--------|----------------------|
| TWI050 | 2N 500g Spool (590m) |
| TWI040 | 3N 500g Spool (900m) |

ELASTIC



| Code | Colour | Size | Roll |
|--------|--------|------|------|
| PEL010 | White | 6mm | 250m |
| PEL011 | Black | 6mm | 250m |
| PEL030 | White | 13mm | 100m |
| PEL031 | Black | 13mm | 100m |
| PEL050 | White | 25mm | 25m |
| PEL051 | Black | 25mm | 25m |

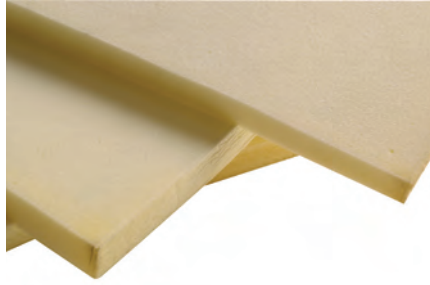
COTTON TAPE



| Code | Colour | Size | Roll |
|--------|--------|------|-----------------|
| PEL200 | White | 6mm | 500m NEW |
| PEL201 | Black | 6mm | 500m NEW |
| PEL210 | White | 13mm | 50m NEW |
| PEL211 | Black | 13mm | 50m NEW |
| PEL220 | Black | 19mm | 50m |
| PEL221 | White | 19mm | 50m |

Foam & Cushions

BACK FOAM



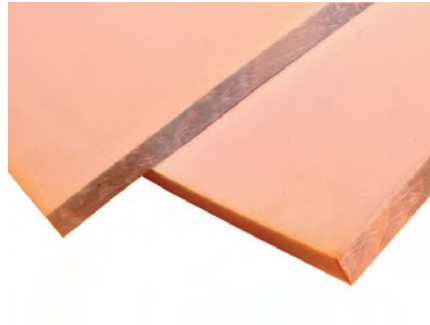
| Code | Size |
|--------|-------------------------------|
| FOA180 | 80x74x1/2" (2032x1880x12mm) |
| FOA200 | 80x74x1" (2032x1880x25mm) |
| FOA215 | 80x74x1 1/2" (2032x1880x37mm) |
| FOA210 | 80x74x2" (2032x1880x50mm) |
| FOA202 | 80x74x3" (2032x1880x75mm) |

BACK FOAM FOR SEAT BACKS



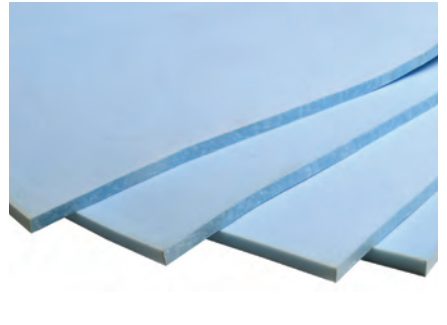
| Code | Size |
|--------|-----------------------------|
| FOA120 | 95x65x1/2" (2413x1651x12mm) |
| FOA121 | 95x65x1" (2413x1651x25mm) |
| FOA122 | 95x65x2" (2413x1651x50mm) |
| FOA123 | 95x65x3" (2413x1651x75mm) |

SOFT SEAT FOAM



| Code | Size |
|--------|---------------------------|
| FOA760 | 88x78x1" (2235x1981x25mm) |

SEAT FOAM



| Code | Size |
|--------|-------------------------------|
| FOA340 | 94x80x1/2" (2388x2032x12mm) |
| FOA360 | 94x80x1" (2388x2032x25mm) |
| FOA362 | 94x80x1 1/2" (2388x2032x37mm) |
| FOA370 | 94x80x2" (2388x2032x50mm) |
| FOA380 | 94x80x3" (2388x2032x75mm) |
| FOA390 | 94x80x4" (2388x2032x100mm) |

Blue Foam
Firmest grade

Peach Foam
Medium grade

Grey Foam
Medium grade

White Foam
Softest grade

5LB RECON FOAM



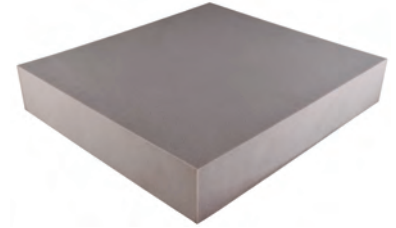
| Code | Size |
|--------|---------------------------|
| FOA410 | 80x60x1" (2032x1524x25mm) |
| FOA420 | 80x60x2" (2032x1524x50mm) |

FIBRE CUSHIONS

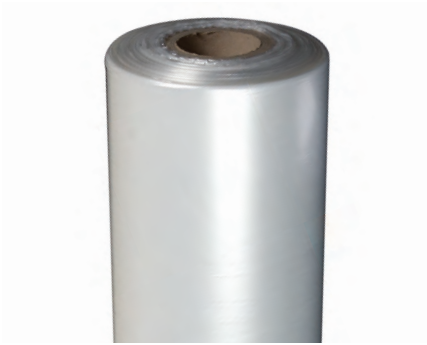
| Code | Size |
|--------|-------------------------|
| CUS040 | 16" x 16" (406 x 406mm) |
| CUS030 | 18" x 18" (457 x 457mm) |
| CUS029 | 20" x 20" (508 x 508mm) |
| CUS042 | 22" x 22" (559 x 559mm) |
| CUS044 | 24" x 24" (610 x 610mm) |

FEATHER CUSHIONS

| Code | Size |
|--------|-------------------------|
| CUS076 | 16" x 16" (406 x 406mm) |
| CUS085 | 18" x 18" (457 x 457mm) |
| CUS090 | 20" x 20" (508 x 508mm) |
| CUS080 | 22" x 22" (559 x 559mm) |
| CUS095 | 24" x 24" (610 x 610mm) |
| CUS097 | 26" x 26" (660 x 660mm) |
| CUS096 | 28" x 28" (711 x 711mm) |

FOAM CUSHIONS

| Code | Size |
|--------|---|
| CUS010 | 20" x 22" x 4" (508 x 559 x 102mm) Blue |
| CUS350 | 20" x 22" x 4" (508 x 559 x 102mm) Pink |
| CUS352 | 22" x 24" x 5" (559 x 610 x 127mm) Pink |
| CUS408 | 20" x 22" x 4" (508 x 559 x 102mm) Grey |

SILK FILM

| Code | Description | Packed in |
|-------|------------------------|-----------|
| SF005 | 69cm Silk Film | 30kg/roll |
| SF040 | 137cm Folded Silk Film | 30kg/roll |

Description

Used as an alternative to Silicone Spray cans when inserting cushions into covers.

STOCKINETTE

| Code | Width | Roll size |
|--------|------------|-----------|
| STK020 | 50cm (20") | 80m/roll |

Description

Polyester/mixed synthetic stockinette for lining foam cushions. Very stretchy in both directions.

STOCKINETTE ROLL-OVER BAGS

| Code | Description | Packed in |
|--------|----------------|------------|
| STK150 | Roll Over Bags | Individual |

Description

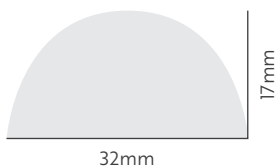
Pre-Sized individual bags of Stockinette for wrapping foam cushions.

#6 PCI Pledge

PCI pledge to always be approachable, helpful and friendly.

Polyfoam

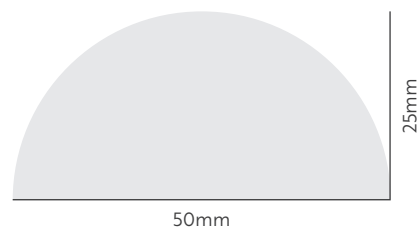
PGI



Code
POL230

Packed in
600m/carton

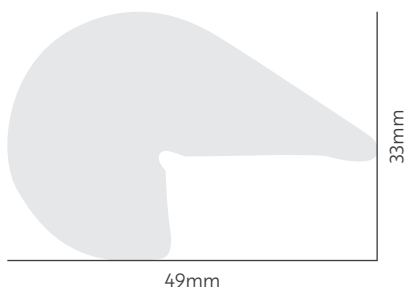
CCI



Code
POL104

Packed in
300m/carton

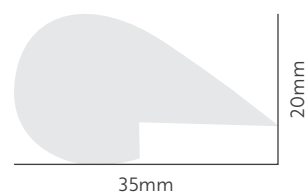
SEI



Code
POL250

Packed in
200m/reel

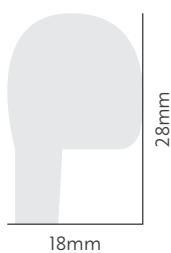
MMI



Code
POL180

Packed in
400m/reel

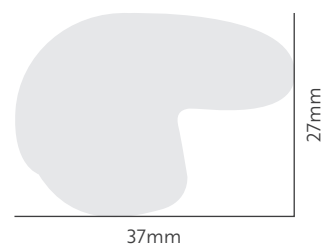
BAI



Code
POL030

Packed in
700m/reel

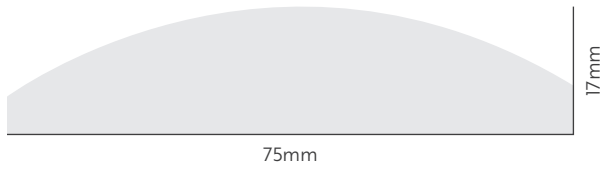
BRI



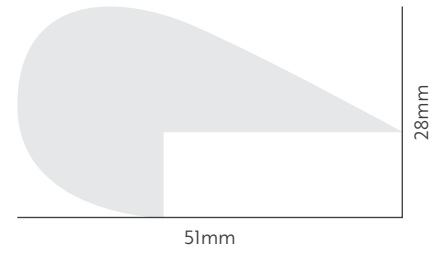
Code
POL080

Packed in
120m/box

KDI



TPF0171



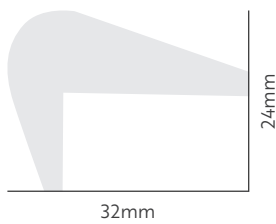
Code
POL138
POL139

Packed in
336m/carton
1.1m 168 lengths/bag **NEW**

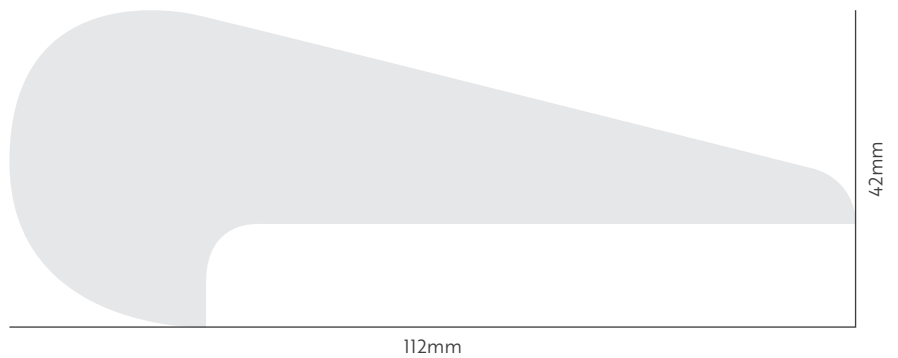
Code
TPF0171

Packed in
168m/box

TPF0173



TPF0183



Code
TPF0173

Packed in
420m/box

Code
TPF0183

Packed in
50.4m/box

PCI offers a wide range of delivery options including our own vehicles which cover a large area of the UK. We have multiple courier options to suit small parcel or pallet deliveries.

Fixings

T NUTS



| Code | Size | Packed In |
|--------|------------|---------------------|
| TNT005 | M6 x 9mm | 1000/bag |
| TNT008 | M6 x 14mm | 1000/bag NEW |
| TNT021 | M8 x 11mm | 1000/bag |
| TNT022 | M8 x 17mm | 1000/bag |
| TNT222 | M10 x 11mm | 1000/bag |

D NUTS (ALLEN KEY)



| Code | Size | Packed In |
|--------|-----------|-----------|
| TNT500 | M8 x 18mm | 1000/bag |
| TNT505 | M8 x 25mm | 1000/bag |

B NUTS (KNOCK IN)



| Code | Size | Packed In |
|--------|-----------|-----------|
| TNT510 | M8 x 23mm | 1000/bag |

M8 ANGLED BRACKETS



| Code | Size |
|-------|-------------|
| FL213 | 67mm x 70mm |

Packed In
200/box

PLASTIC WASHER



| Code | Size |
|-------|--------------------------------|
| FL112 | Diameter 50mm with 8mm hole |

Packed In
1000/box

FACING FIXINGS



| Code | Description | Packed in |
|--------|-------------|-----------|
| FAC684 | 20mm Black | 1000/box |
| FAC630 | 27mm Black | 1000/box |
| FAC683 | 35mm Black | 1000/box |
| FAC685 | 40mm White | 1000/box |

Struts & Hinges

A selection of the hinges we can source are shown here.

We constantly work with manufacturers to design and create bespoke items when required.

GAS STRUTS



| Code | Strength | Size |
|--------|----------|-------|
| GAS005 | 80N | 245mm |
| GAS010 | 100N | 245mm |
| GAS015 | 150N | 245mm |
| GAS020 | 200N | 245mm |

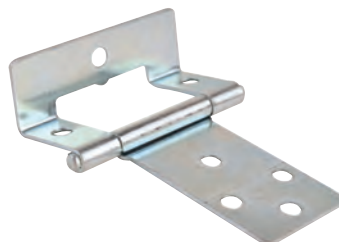
Description
Includes Fixings

STOOL HINGES



| Code | Description |
|--------|---------------------------------|
| STO006 | Locking hinges with 150mm plate |

FLUSH HINGES



| Code | Size | Finish |
|-------|------|--------------|
| FL215 | 50mm | Zinc plated |
| FL217 | 50mm | Brass plated |

"CLIC CLAC" SOFA BED HINGE



| Code | Description |
|-------|---------------------------|
| FL201 | 260mm Long Sofa Bed Hinge |

Connectors

PLASTIC UNIT CONNECTOR



Code
FL076

Description
Plastic Unit
Connector

Packed In
500/bag

METAL UNIT CONNECTOR

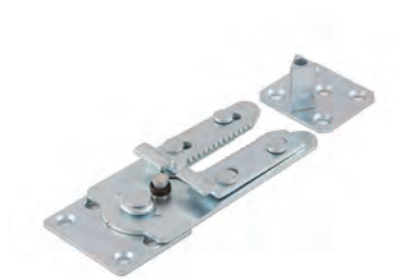


Code
FL077

Description
Metal Unit
Connector

Packed In
300/bag

HEAVY DUTY FURNITURE CONNECTOR



Code **Description**
FL110 130mm Complete Pair
FL110/A 130mm Connector **NEW**
FL110/C XL 160mm Connector **NEW**
FL110/B Stud Fixing **NEW**

PLASTIC FURNITURE CONNECTOR



Code **Description**
FL109 Plastic Furniture
Connector

KD FIXING BRACKET

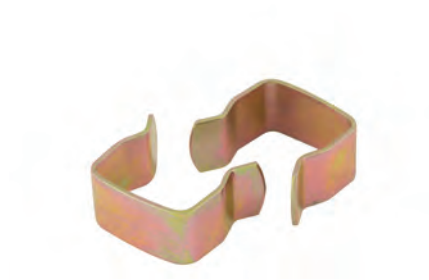


Code
FL210

Description
KD Fixing Bracket

Packed In
100/bag

DIVAN CLIPS



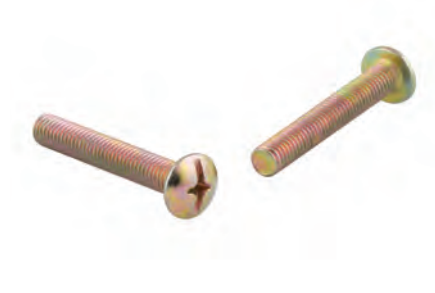
Code
BEF010

Description
Steel Divan Bed Clips

Packed in
300/box

Bedding

HEADBOARD BOLTS



| Code | Description/Size | Packed in |
|-------|------------------|-----------|
| BA018 | M8 x 50mm | 1000/box |
| BA024 | M8 x 75mm | 1000/box |

HEADBOARD WASHER



| Code | Description/Size | Packed in |
|-------|------------------|-----------|
| BA015 | Headboard Washer | 2000/box |

ONE PIECE BOLT & WASHER



| Code | Size | Packed in |
|-------|-----------|-----------|
| BA216 | M8 x 50mm | 500/box |

HEADBOARD STRUTS



| Code | Size |
|---------|-----------------------------|
| HBS1006 | 17 x 40 x 610mm Multifix |
| HBS1004 | 17 x 56 x 762mm Multifix |

BED BRACKET



| Code | Description |
|-------|-----------------------------|
| FL205 | 4 x Corner Brackets |
| FL207 | Middle Support Rail Bracket |

TELESCOPIC DRAWER RUNNERS



| Code | Description |
|-------|---------------------------------|
| BA010 | 40cm Closed to 79cm Extended |

2-Fold Mechanisms

2-FOLD SOFA BED ACTIONS



| Code | Fixing Width | Sleeping Area | Mattress Width | Suitable with |
|--------|--------------|---------------|----------------|---------------|
| STY029 | 92cm | 80cm | 70cm | MAT288 |
| STY027 | 112cm | 100cm | 90cm | MAT287 |
| STY025 | 132cm | 120cm | 110cm | MAT285 |
| STY023 | 152cm | 140cm | 130cm | MAT280 |
| STY022 | 162cm | 150cm | 140cm | MAT275 |

10CM DEEP INTERIOR SPRUNG MATTRESS



| Code | Size | Suits |
|--------|-------|--------|
| MAT288 | 70cm | STY029 |
| MAT287 | 90cm | STY027 |
| MAT285 | 110cm | STY025 |
| MAT280 | 130cm | STY023 |
| MAT275 | 140cm | STY022 |

WITH CRIB 5 COVER



| Code | Size | Suits |
|--------|-------|--------|
| MAT284 | 110cm | STY025 |
| MAT281 | 130cm | STY023 |
| MAT276 | 140cm | STY022 |

12CM DEEP INTERIOR SPRUNG MATTRESS



| Code | Size | Suits |
|--------|-------|--------|
| MAT289 | 110cm | STY025 |
| MAT290 | 130cm | STY023 |
| MAT291 | 140cm | STY022 |

Please ask for other sizes as we may be able to source.

3-Fold Mechanisms

3-FOLD SOFA BED ACTIONS



| Code | Fixing Width | Sleeping Area | Mattress Width | Suitable with |
|--------|--------------|---------------|----------------|---------------|
| STY060 | 82cm | 70cm | 60cm | MAT200 |
| STY059 | 92cm | 80cm | 70cm | MAT205 |
| STY058 | 102cm | 90cm | 80cm | MAT210 |
| STY057 | 112cm | 100cm | 90cm | MAT220 |
| STY055 | 132cm | 120cm | 110cm | MAT230 |
| STY053 | 152cm | 140cm | 130cm | MAT240 |
| STY052 | 162cm | 150cm | 140cm | MAT250 |

FOAM MATTRESS



| Code | Size | Suits |
|--------|-------|--------|
| MAT200 | 60cm | STY060 |
| MAT205 | 70cm | STY059 |
| MAT210 | 80cm | STY058 |
| MAT220 | 90cm | STY057 |
| MAT230 | 110cm | STY055 |
| MAT240 | 130cm | STY053 |
| MAT250 | 140cm | STY052 |

WITH CRIB 5 COVER



| Code | Size | Suits |
|--------|-------|--------|
| MAT202 | 60cm | STY060 |
| MAT203 | 70cm | STY059 |
| MAT206 | 90cm | STY057 |
| MAT232 | 110cm | STY055 |
| MAT204 | 140cm | STY052 |

POCKET SPRUNG MATTRESS



| Code | Size | Suits |
|--------|-------|--------|
| MAT505 | 90cm | STY057 |
| MAT504 | 110cm | STY055 |
| MAT502 | 130cm | STY053 |
| MAT501 | 140cm | STY052 |

WITH CRIB 5 COVER



| Code | Size | Suits |
|--------|-------|--------|
| MAT508 | 80cm | STY058 |
| MAT506 | 90cm | STY057 |
| MAT507 | 110cm | STY055 |
| MAT500 | 130cm | STY053 |

Swivel Bases

5 STAR CHROME SWIVEL BASE WITH STAND



Code
SB0200

Size
D 610mm (24")
x H 190mm (7.5")

TRUMPET CHROME SWIVEL BASE WITH STAND



Code
SB0002

Size
D 600mm (23.6")
x H 205mm (8.1")

DOMED CHROME SWIVEL BASE WITH STAND



Code
SB0001

Size
D 580mm (22.8")
x H 185mm (7.3")

FLAT STAINLESS STEEL SWIVEL BASE WITH STAND



Code
SB0220

Size
D 580mm (22.8")
x H 190mm (7.5")

SWIVEL BASE WITH PLATE



Code
SB0100
SB0101

Size
D 610mm (24")
D 870mm (34")

SQUARE SWIVEL PLATE



Code
SB0007
SB0008

Size
D 254mm (10" x 10")
D 200mm (8" x 8") **NEW**

Glass Buttons

We can source glass buttons in multiple colours, with a variety of fixing options available.

Contact the Sales Team if you wish to discuss this further.

CLEAR GLASS BUTTONS



| Code | Size | Packed in |
|--------|------|-----------|
| BUT400 | 20mm | 1000/box |
| BUT401 | 25mm | 550/box |

CLEAR GLASS PRONG BACK BUTTONS



| Code | Size | Packed in |
|--------|--------------------|-----------|
| BUT430 | 25mm 58mm Prong | 1000/box |

ACRYLIC CLEAR DIAMOND NAIL BACK BUTTONS



| Code | Size | Colour | Packed in |
|--------|------|--------|-----------|
| BUT422 | 22mm | Clear | 200/box |
| BUT424 | 25mm | Clear | 200/box |
| BUT425 | 25mm | Black | 200/box |

ACRYLIC DIAMOND LOOP BACK BUTTONS



| Code | Size | Packed in |
|--------|------|-----------|
| BUT410 | 16mm | 100/box |
| BUT412 | 20mm | 300/box |
| BUT414 | 25mm | 100/box |

Tools & Needles

MAGNETIC TACK HAMMER



Code
UST005

Description
Magnetic hammer with a split head to enable usage on differing jobs.

BRONZE MAGNETIC HAMMER



Code
UST010

Description
Bronzed magnetic hammer to ensure that the hammer stays magnetised for longer.

NYLON TIP TACK HAMMER



Code
UST009

Description
Much like UST010 with one nylon tipped head for usage on decorative nails and other delicate jobs where soft strikes are needed.

RIPPING HAMMER



Code
UST002

Description
Used to remove old upholstery fabric and staples from furniture.

HICKORY MALLET



Code
UST077

Description
Small powerful mallet that allows working into tight corners with a balanced head to give good even output.

RUBBER MALLET



Code
UST075

Description
Rubberised head to be used without fear of marking or destroying surface area.

STAPLE REMOVER



Code
UST030

Description
Carefully hardened for long lasting use, a quality product designed to last.

BLADE STYLE STAPLE REMOVER



Code
UST031

Description
Pointed blade with hardwood handle to achieve great results in removing both staples and tacks.

MUNDIAL STAPLE REMOVER



Code
UST032

Description
Plastic handled version of UST030.

STAPLE LIFTER



Code
UST020

Description
Plastic handled with longer neck to remove staples of any size.

PROFESSIONAL STAPLE REMOVER



Code
UST036

Description
Retains staples whilst removing them whilst its ergonomic grip makes for comfortable use no matter how long the job.

RIPPING PINCERS



Code
UST004

Description
A rugged forged steel pincer for heavy cutting. Polished flush cut jaws for getting close to a flat surface.

ALUMINIUM RULE



Code
UST022
UST023

Size
1m (40")
1.5m (60")

Description
Sturdy and wide ruler, with etched numbers with hole punch for hanging.

1M (40") WOODEN RULE



Code
UST026

Description
Brass ended with hole for hanging, made from dried hard maple with a smooth finish and lacquer for great use on all surfaces.

Other sundries such as tape measures, Stanley knives and more rulers are available as special order items.

PROFESSIONAL TAILORS SHEARS



| Code | Description |
|--------|-------------|
| BEX050 | 8" |
| BEX051 | 9" |
| BEX052 | 10" |
| BEX054 | 12" |

PREMIUM MUNDIAL SHEARS



| Code | Description |
|--------|-------------|
| BEX010 | 10" |
| BEX020 | 12" |
| BEX030 | 10" Point |
| BEX035 | 12" Point |

PREMIUM SOFT HANDLE SHEARS



| Code | Description |
|--------|-------------|
| BEX140 | 8" |
| BEX141 | 10" |
| BEX142 | 12" |

LEFT HANDED SHEARS



| Code | Description |
|--------|-------------|
| BEX130 | 10" |

4" METAL THREAD SNIPS



| Code | Size |
|--------|------|
| UST112 | 10cm |

PREMIUM THREAD CUTTER

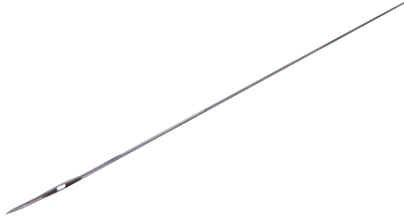


| Code | Size |
|--------|------|
| UST108 | 10cm |

#7 PCI Pledge

PCI pledge to pick up the phone, keep you informed, manage expectations and then ultimately deliver on our promises.

STRAIGHT DOUBLE ROUND POINT 505 NEEDLES



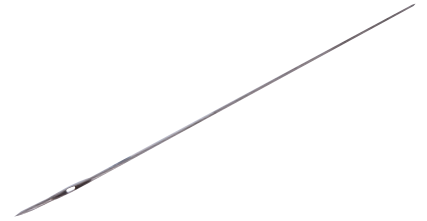
| Code | Size | Gauge |
|---------|------|-------|
| UST2300 | 10" | 13 |
| UST230 | 12" | 13 |
| UST235 | 14" | 13 |
| UST240 | 16" | 12 |

STRAIGHT DOUBLE ROUND POINT HEAVY NEEDLES



| Code | Size | Gauge |
|--------|------|-------|
| UST241 | 10" | 12 |
| UST242 | 12" | 12 |
| UST245 | 14" | 11 |
| UST250 | 16" | 11 |

STRAIGHT DOUBLE THREE SQUARE POINT HEAVY NEEDLES



| Code | Size | Gauge |
|--------|------|-------|
| UST216 | 10" | 12 |
| UST217 | 12" | 12 |
| UST218 | 14" | 12 |
| UST219 | 16" | 11 |

EXTRA LIGHT ROUND POINT CURVED NEEDLES



| Code | Size | Gauge |
|--------|------|-------|
| UST193 | 4" | 18 |

Description
Also known as "Slipping Needles".

LIGHT ROUND POINT CURVED NEEDLES



| Code | Size | Gauge |
|--------|--------|-------|
| UST228 | 2 1/2" | 18 |
| UST231 | 4" | 16 |

HEAVY ROUND POINT CURVED NEEDLES



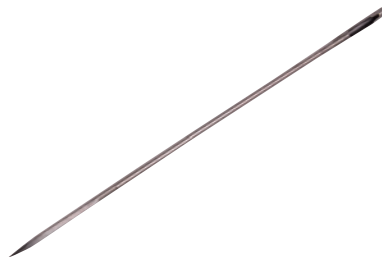
| Code | Size | Gauge |
|--------|--------|-------|
| UST180 | 2 1/2" | 17 |
| UST194 | 4" | 15 |
| UST195 | 5" | 14 |

REGULATOR



| Code | Size | Gauge |
|--------|------|-------|
| UST157 | 8" | 9 |
| UST158 | 10" | 8 |
| UST159 | 12" | 7 |

CAVITY NEEDLE



| Code | Size |
|--------|------------|
| BUT288 | 15" (38cm) |
| BUT290 | 12" (30cm) |

Additional Information
For use with button tapes.

UPHOLSTERY PINS



| Code | Size | Packed in |
|--------|------|------------|
| UST170 | 4" | 144/carton |

Description
Also known as "Lay Pins". Used for holding upholstery fabric in place ready for Stapling or Stitching.

SPRING BENDER



Code
UST060

Description
Simple in application and highly efficient in use. Precisely manufactured so that arcs, angles or curves can be properly made. Supplied in pairs.

LEVER SPRING STRETCHER



Code
UST070

Description
For heavy duty usage on installations, a safe method for installing sinuous type springs.

SPRING END FORMER



Code
UST090

Description
Used for crimping the end of Zig Zag springs and open end coil springs.

WEBBING STRETCHER



Code
UST067

Description
Can be used with any type of webbing without marking webbing itself, no sharp teeth give extra safety.

WEBBING & HIDE STRETCHER



Code
UST100

Description
Excellent tool for stretching canvas and leathers as well as webbing. The hammer acts as a lever when a strong pull is required, without marking fabric surface.

GOOSENECK WEBBING STRETCHER



Code
UST065

Description
A hand stretcher to catch the webbing close to the frame with plenty of leverage.

HOG RING PLIERS



Code
UST050

Description
Made from forged steel, straight handle to close hog rings (UST051).

DIAGONAL HOG RING PLIERS



Code
UST055

Description
Made from forged steel, diagonal handle to close hog rings (UST051).

HOG RINGS 5LB BOX



Code
UST051

Description
For use with UST050/055

Description
Stainless steel hog rings, for use with UST050 & UST055.

Our Sales Team will be happy to discuss which tools would be suitable for your needs, call us on **0113 235 1111**.

DECORATIVE NAIL PLACE



Code
UST019

Description
Holds nails in place before hammering in.

PNEUMATIC DECORATIVE NAIL GUN



Code
UST620

Description
Used for fast application of 9.6mm loose decorative nails.

AIR COMPRESSOR 6L TANK



Code
UST600

Description
An economic yet powerful compressor, oil free, direct drive. Suitable for use with our pneumatic staple guns and nail guns.

COILED AIR HOSE



Code **Length**
UST610 7.6m

Description
To be used with UST600.

Other fixings for use with air tools can be sourced upon request.

PVA WOOD GLUE



Code
ADH150
ADH155
ADH156

Packed in
1kg Bottle
5kg Container
25kg Container

12" CLEAR GLUE STICKS



Code
UST165
YIUST165

Packed in
160 pieces/pack (5kg)
16 pieces/pack

TACWISE CORDED GLUE GUN



Code **Description**
UST135 Mains operated hot melt glue gun

ECONOMY WAX



| Code | Colour | Packed in |
|---------|--------|-----------|
| UST0013 | Blue | 48/box |
| UST0014 | Red | 48/box |
| UST0017 | Yellow | 48/box |

HANCOCKS TAILORS WAX



| Code | Colour | Packed in |
|--------|--------|-------------------|
| UST141 | Blue | 50/box |
| UST142 | Red | 50/box |
| UST143 | Yellow | 50/box |
| UST153 | Black | 50/box NEW |

WAX PENCILS



| Code | Description | Packed in |
|--------|-----------------------------|-----------|
| UST140 | London Wax Pencils Assorted | 25/Box |

HANCOCKS TAILORS CHALK



| Code | Colour | Packed in |
|--------|----------|-----------|
| UST145 | White | 50/box |
| UST146 | Blue | 50/box |
| UST147 | Yellow | 50/box |
| UST148 | Red | 50/box |
| UST150 | Assorted | 50/box |

CHALK SHARPENER



| Code |
|--------|
| UST155 |

PREMIUM HEAVY DUTY HAND HELD FABRIC CUTTER



| Code | Description |
|--------|--------------------|
| CUT170 | Heavy Duty Cutter |
| CUT171 | 6 Sided Blade |
| CUT172 | Round Cutter Blade |

All the products shown in this catalogue are stocked items, ready to order with no minimum order quantity and a lead time of a few days.

For bespoke production enquiries, call or email the Sales Team, who will happily discuss options with you.

FINE CUT UPHOLSTERY TACKS



| Code | Size | Packed in |
|--------|-------------|-----------|
| UST256 | 10mm (3/8") | 500g/box |
| UST259 | 13mm (1/2") | 500g/box |
| UST257 | 13mm (1/2") | 10kg/box |
| UST263 | 15mm (5/8") | 500g/box |

BLUE BARBED CLOUT NAILS



| Code | Size | Packed in |
|--------|------|-----------|
| UST880 | 25mm | 500g/box |
| UST882 | 25mm | 25kg/box |

WOOD TO METAL DOWEL



| Code | Size | Packed in |
|-------|-----------|-----------|
| BA394 | M8 x 70mm | 1000/box |

TWIST PINS



| Code | Packed in |
|--------|------------|
| UST175 | 100/carton |

Description
Ideal for holding loose covers in position.

ALLEN KEYS



| Code | Size | Packed in |
|-------|------|------------|
| BA032 | 5mm | Bag of 100 |

SCREWS WITH ALLEN KEY HEAD



| Code | Size | Packed in |
|-------|-----------|-----------|
| BA031 | M8 x 50mm | 100/box |

SLIDER JIG



| Code | Description |
|--------|---------------------|
| SLI501 | Number 3 Slider Jig |
| SLI500 | Number 5 Slider Jig |

Description
Easily attach slider heads to zipping chain.

SEWING MACHINE OIL



| Code | Packed in |
|--------|--------------|
| UST138 | 5L Container |

TUFTING NEEDLES & CLASPS



| Code | Size | Packed in |
|--------|----------------|-----------|
| UST082 | Tufting Needle | 144/Pack |
| UST083 | Clasps | |

Ambla Fabric

We stock the full range of Ambla Richmond in Colour alongside a wide selection of other Ambla designs.

Items are available as cut lengths as well as by the full roll. Ambla fabric complies with BS5852 Section 4 Ignition Source 0 & 1 plus clause 11, Ignition Source 5 CRIB 5 when used in combination with CMHR foam.

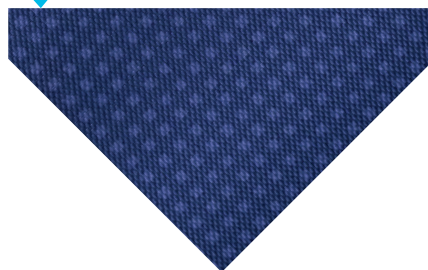
BERKSHIRE CAVERSHAM



| | | |
|-------------|--------------|------------------|
| Code | Width | Roll Size |
| AMB501 | 137cm | 35m |

COMPLIES WITH BS5852 SECTION 4, IGNITION SOURCE 0 & 1, PLUS CLAUSE 11, IGNITION SOURCE 5 CRIB 5

BERKSHIRE NEWBURY



| | | |
|-------------|--------------|------------------|
| Code | Width | Roll Size |
| AMB502 | 137cm | 35m |

COMPLIES WITH BS5852 SECTION 4, IGNITION SOURCE 0 & 1, PLUS CLAUSE 11, IGNITION SOURCE 5 CRIB 5

BERKSHIRE BOXFORD



| | | |
|-------------|--------------|------------------|
| Code | Width | Roll Size |
| AMB503 | 137cm | 35m |

COMPLIES WITH BS5852 SECTION 4, IGNITION SOURCE 0 & 1, PLUS CLAUSE 11, IGNITION SOURCE 5 CRIB 5

BERKSHIRE BURGHFIELD



| | | |
|-------------|--------------|------------------|
| Code | Width | Roll Size |
| AMB507 | 137cm | 35m |

COMPLIES WITH BS5852 SECTION 4, IGNITION SOURCE 0 & 1, PLUS CLAUSE 11, IGNITION SOURCE 5 CRIB 5

EXMOOR ALLERFORD



Code AMB401 **Width** 137cm **Roll Size** 30m

COMPLIES WITH BS5852 SECTION 4, IGNITION SOURCE 0 & 1, PLUS CLAUSE 11, IGNITION SOURCE 5 CRIB 5

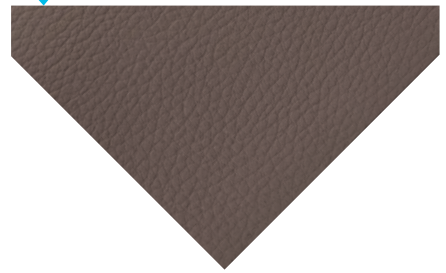
EXMOOR HURLSTONE



Code AMB408 **Width** 137cm **Roll Size** 30m

COMPLIES WITH BS5852 SECTION 4, IGNITION SOURCE 0 & 1, PLUS CLAUSE 11, IGNITION SOURCE 5 CRIB 5

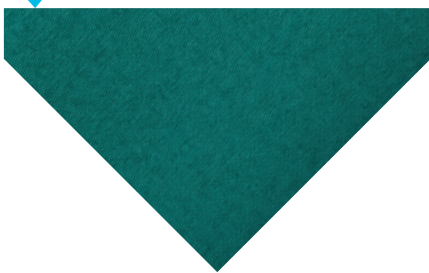
EXMOOR HOLNICOTE



Code AMB407 **Width** 137cm **Roll Size** 30m

COMPLIES WITH BS5852 SECTION 4, IGNITION SOURCE 0 & 1, PLUS CLAUSE 11, IGNITION SOURCE 5 CRIB 5

WILD HEATHER HARRIS



Code AMB704 **Width** 137cm **Roll Size** 35m

COMPLIES WITH BS5852 SECTION 4, IGNITION SOURCE 0 & 1, PLUS CLAUSE 11, IGNITION SOURCE 5 CRIB 5

WILD HEATHER SKYE



Code AMB712 **Width** 137cm **Roll Size** 35m

COMPLIES WITH BS5852 SECTION 4, IGNITION SOURCE 0 & 1, PLUS CLAUSE 11, IGNITION SOURCE 5 CRIB 5

WILD HEATHER NINIAN



Code AMB701 **Width** 137cm **Roll Size** 35m

COMPLIES WITH BS5852 SECTION 4, IGNITION SOURCE 0 & 1, PLUS CLAUSE 11, IGNITION SOURCE 5 CRIB 5

WILD HEATHER LOMOND



Code AMB707 **Width** 137cm **Roll Size** 35m

COMPLIES WITH BS5852 SECTION 4, IGNITION SOURCE 0 & 1, PLUS CLAUSE 11, IGNITION SOURCE 5 CRIB 5

WILD HEATHER OBAN



Code AMB715 **Width** 137cm **Roll Size** 35m

COMPLIES WITH BS5852 SECTION 4, IGNITION SOURCE 0 & 1, PLUS CLAUSE 11, IGNITION SOURCE 5 CRIB 5

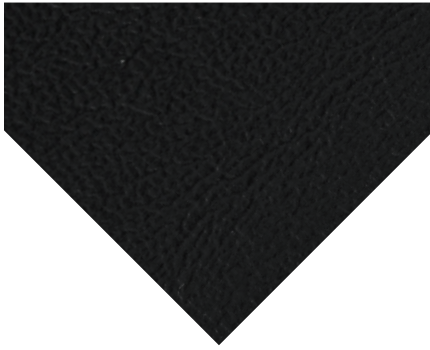
WILD HEATHER BUTE



Code AMB717 **Width** 137cm **Roll Size** 35m

COMPLIES WITH BS5852 SECTION 4, IGNITION SOURCE 0 & 1, PLUS CLAUSE 11, IGNITION SOURCE 5 CRIB 5

RICHMOND BLACK



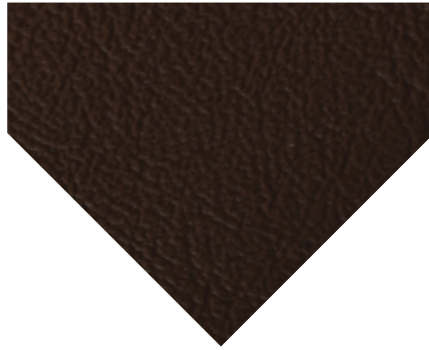
Code
AMB001

Width
137cm

Roll Size
30m

COMPLIES WITH BS5852 SECTION 4,
IGNITION SOURCE 0 & 1, PLUS CLAUSE
11, IGNITION SOURCE 5 CRIB 5

RICHMOND CHOCOLATE



Code
AMB002

Width
137cm

Roll Size
30m

COMPLIES WITH BS5852 SECTION 4,
IGNITION SOURCE 0 & 1, PLUS CLAUSE
11, IGNITION SOURCE 5 CRIB 5

RICHMOND ROSEHIP



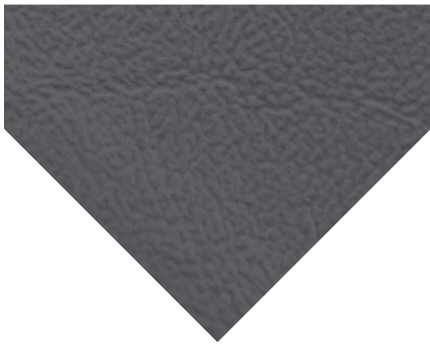
Code
AMB018

Width
137cm

Roll Size
30m

COMPLIES WITH BS5852 SECTION 4,
IGNITION SOURCE 0 & 1, PLUS CLAUSE
11, IGNITION SOURCE 5 CRIB 5

RICHMOND FLAKE



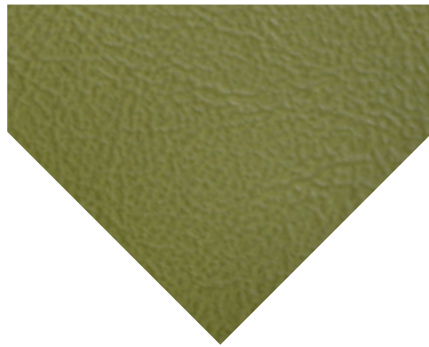
Code
AMB004

Width
137cm

Roll Size
30m

COMPLIES WITH BS5852 SECTION 4,
IGNITION SOURCE 0 & 1, PLUS CLAUSE
11, IGNITION SOURCE 5 CRIB 5

RICHMOND LIME



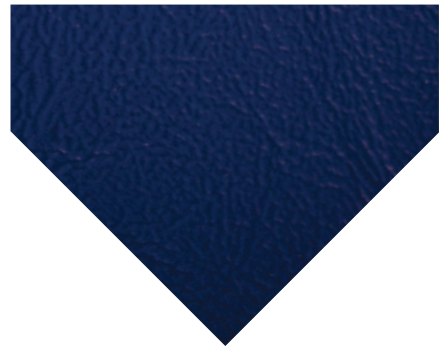
Code
AMB005

Width
137cm

Roll Size
30m

COMPLIES WITH BS5852 SECTION 4,
IGNITION SOURCE 0 & 1, PLUS CLAUSE
11, IGNITION SOURCE 5 CRIB 5

RICHMOND CORNFLOWER



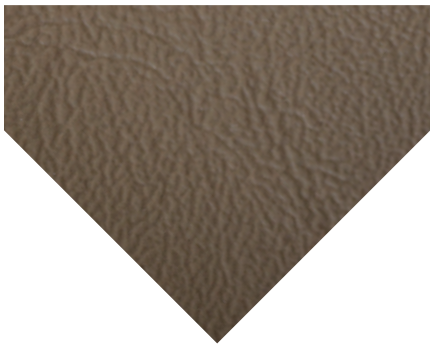
Code
AMB003

Width
137cm

Roll Size
30m

COMPLIES WITH BS5852 SECTION 4,
IGNITION SOURCE 0 & 1, PLUS CLAUSE
11, IGNITION SOURCE 5 CRIB 5

RICHMOND TRUFFLE



Code
AMB007

Width
137cm

Roll Size
30m

COMPLIES WITH BS5852 SECTION 4,
IGNITION SOURCE 0 & 1, PLUS CLAUSE
11, IGNITION SOURCE 5 CRIB 5

RICHMOND SNOW WHITE



Code
AMB008

Width
137cm

Roll Size
30m

COMPLIES WITH BS5852 SECTION 4,
IGNITION SOURCE 0 & 1, PLUS CLAUSE
11, IGNITION SOURCE 5 CRIB 5

RICHMOND POPPY



Code
AMB006

Width
137cm

Roll Size
30m

COMPLIES WITH BS5852 SECTION 4,
IGNITION SOURCE 0 & 1, PLUS CLAUSE
11, IGNITION SOURCE 5 CRIB 5

RICHMOND JUNO BLACK



Code
AMB101

Width
137cm

Roll Size
30m

COMPLIES WITH BS5852 SECTION 4,
IGNITION SOURCE 0 & 1, PLUS CLAUSE
11, IGNITION SOURCE 5 CRIB 5

RICHMOND JUNO CHOCOLATE



Code
AMB102

Width
137cm

Roll Size
30m

COMPLIES WITH BS5852 SECTION 4,
IGNITION SOURCE 0 & 1, PLUS CLAUSE
11, IGNITION SOURCE 5 CRIB 5

RICHMOND JUNO ROSEHIP



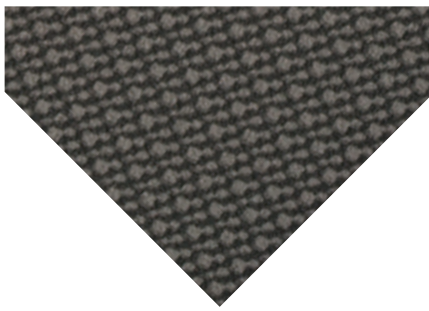
Code
AMB109

Width
137cm

Roll Size
30m

COMPLIES WITH BS5852 SECTION 4,
IGNITION SOURCE 0 & 1, PLUS CLAUSE
11, IGNITION SOURCE 5 CRIB 5

RICHMOND JUNO FLAKE



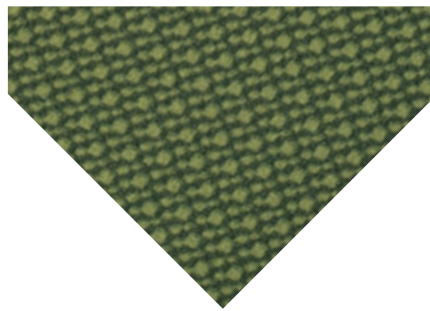
Code
AMB104

Width
137cm

Roll Size
30m

COMPLIES WITH BS5852 SECTION 4,
IGNITION SOURCE 0 & 1, PLUS CLAUSE
11, IGNITION SOURCE 5 CRIB 5

RICHMOND JUNO LIME



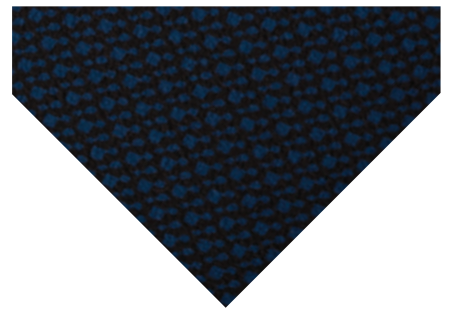
Code
AMB105

Width
137cm

Roll Size
30m

COMPLIES WITH BS5852 SECTION 4,
IGNITION SOURCE 0 & 1, PLUS CLAUSE
11, IGNITION SOURCE 5 CRIB 5

RICHMOND JUNO CORNFLOWER



Code
AMB103

Width
137cm

Roll Size
30m

COMPLIES WITH BS5852 SECTION 4,
IGNITION SOURCE 0 & 1, PLUS CLAUSE
11, IGNITION SOURCE 5 CRIB 5

RICHMOND JUNO TRUFFLE



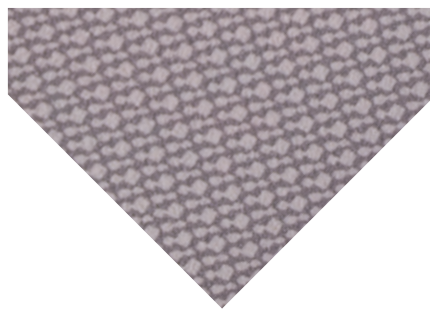
Code
AMB107

Width
137cm

Roll Size
30m

COMPLIES WITH BS5852 SECTION 4,
IGNITION SOURCE 0 & 1, PLUS CLAUSE
11, IGNITION SOURCE 5 CRIB 5

RICHMOND JUNO SNOW WHITE



Code
AMB108

Width
137cm

Roll Size
30m

COMPLIES WITH BS5852 SECTION 4,
IGNITION SOURCE 0 & 1, PLUS CLAUSE
11, IGNITION SOURCE 5 CRIB 5

RICHMOND JUNO POPPY



Code
AMB106

Width
137cm

Roll Size
30m

COMPLIES WITH BS5852 SECTION 4,
IGNITION SOURCE 0 & 1, PLUS CLAUSE
11, IGNITION SOURCE 5 CRIB 5

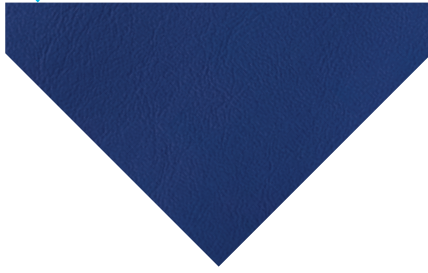
RICHMOND MANGO



Code AMB011 **Width** 137cm **Roll Size** 30m

COMPLIES WITH BS5852 SECTION 4,
IGNITION SOURCE 0 & 1, PLUS CLAUSE
11, IGNITION SOURCE 5 CRIB 5

RICHMOND BLUEBELL



Code AMB012 **Width** 137cm **Roll Size** 30m

COMPLIES WITH BS5852 SECTION 4,
IGNITION SOURCE 0 & 1, PLUS CLAUSE
11, IGNITION SOURCE 5 CRIB 5

RICHMOND LEAF GREEN



Code AMB023 **Width** 137cm **Roll Size** 30m

COMPLIES WITH BS5852 SECTION 4,
IGNITION SOURCE 0 & 1, PLUS CLAUSE
11, IGNITION SOURCE 5 CRIB 5

RICHMOND BLOSSOM



Code AMB013 **Width** 137cm **Roll Size** 30m

COMPLIES WITH BS5852 SECTION 4,
IGNITION SOURCE 0 & 1, PLUS CLAUSE
11, IGNITION SOURCE 5 CRIB 5

RICHMOND IRIS



Code AMB017 **Width** 137cm **Roll Size** 30m

COMPLIES WITH BS5852 SECTION 4,
IGNITION SOURCE 0 & 1, PLUS CLAUSE
11, IGNITION SOURCE 5 CRIB 5

RICHMOND MUSHROOM



Code AMB024 **Width** 137cm **Roll Size** 30m

COMPLIES WITH BS5852 SECTION 4,
IGNITION SOURCE 0 & 1, PLUS CLAUSE
11, IGNITION SOURCE 5 CRIB 5

RICHMOND FIRECRACKER



Code AMB022 **Width** 137cm **Roll Size** 30m

COMPLIES WITH BS5852 SECTION 4,
IGNITION SOURCE 0 & 1, PLUS CLAUSE
11, IGNITION SOURCE 5 CRIB 5

RICHMOND FEATHER



Code AMB010 **Width** 137cm **Roll Size** 30m

COMPLIES WITH BS5852 SECTION 4,
IGNITION SOURCE 0 & 1, PLUS CLAUSE
11, IGNITION SOURCE 5 CRIB 5

RICHMOND DAMSON



Code AMB016 **Width** 137cm **Roll Size** 30m

COMPLIES WITH BS5852 SECTION 4,
IGNITION SOURCE 0 & 1, PLUS CLAUSE
11, IGNITION SOURCE 5 CRIB 5

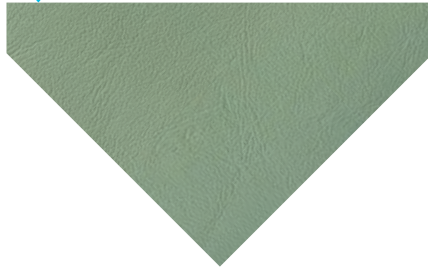
**RICHMOND
BLACKCURRANT**

Code
AMB009

Width
137cm

Roll Size
30m

COMPLIES WITH BS5852 SECTION 4,
IGNITION SOURCE 0 & 1, PLUS CLAUSE
11, IGNITION SOURCE 5 CRIB 5

RICHMOND APPLE

Code
AMB014

Width
137cm

Roll Size
30m

COMPLIES WITH BS5852 SECTION 4,
IGNITION SOURCE 0 & 1, PLUS CLAUSE
11, IGNITION SOURCE 5 CRIB 5

RICHMOND BLUEBERRY

Code
AMB015

Width
137cm

Roll Size
30m

COMPLIES WITH BS5852 SECTION 4,
IGNITION SOURCE 0 & 1, PLUS CLAUSE
11, IGNITION SOURCE 5 CRIB 5

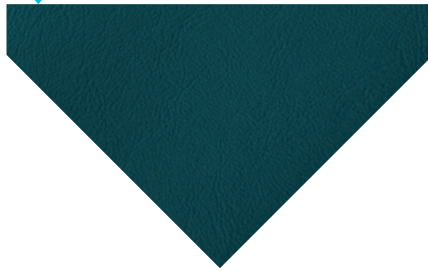
RICHMOND SUNFLOWER

Code
AMB019

Width
137cm

Roll Size
30m

COMPLIES WITH BS5852 SECTION 4,
IGNITION SOURCE 0 & 1, PLUS CLAUSE
11, IGNITION SOURCE 5 CRIB 5

RICHMOND ORCHID

Code
AMB020

Width
137cm

Roll Size
30m

COMPLIES WITH BS5852 SECTION 4,
IGNITION SOURCE 0 & 1, PLUS CLAUSE
11, IGNITION SOURCE 5 CRIB 5

RICHMOND PEACH

Code
AMB021

Width
137cm

Roll Size
30m

COMPLIES WITH BS5852 SECTION 4,
IGNITION SOURCE 0 & 1, PLUS CLAUSE
11, IGNITION SOURCE 5 CRIB 5

Ambla Fabric is used extensively in healthcare, office, education, leisure, marine, hospitality and airport environments.

Ambla contains active ingredients which protect against the growth and spread of mildew and also retains its effectiveness after cleaning. Manufactured in the UK to the highest quality standards it is the ideal fabric for contract environments.

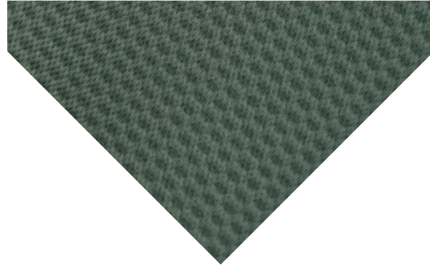
YORK WEAVE TRINITY



Code AMB601 **Width** 137cm **Roll Size** 35m

COMPLIES WITH BS5852 SECTION 4,
IGNITION SOURCE 0 & 1, PLUS CLAUSE
11, IGNITION SOURCE 5 CRIB 5

YORK WEAVE FOSS BANK



Code AMB611 **Width** 137cm **Roll Size** 35m

COMPLIES WITH BS5852 SECTION 4,
IGNITION SOURCE 0 & 1, PLUS CLAUSE
11, IGNITION SOURCE 5 CRIB 5

YORK WEAVE WHIPNEY



Code AMB605 **Width** 137cm **Roll Size** 35m

COMPLIES WITH BS5852 SECTION 4,
IGNITION SOURCE 0 & 1, PLUS CLAUSE
11, IGNITION SOURCE 5 CRIB 5

MUNRO KEEN



Code AMB301 **Width** 137cm **Roll Size** 35m

COMPLIES WITH BS5852 SECTION 4,
IGNITION SOURCE 0 & 1, PLUS CLAUSE
11, IGNITION SOURCE 5 CRIB 5

MUNRO CAIRNWELL



Code AMB305 **Width** 137cm **Roll Size** 35m

COMPLIES WITH BS5852 SECTION 4,
IGNITION SOURCE 0 & 1, PLUS CLAUSE
11, IGNITION SOURCE 5 CRIB 5

MUNRO HOPE



Code AMB308 **Width** 137cm **Roll Size** 35m

COMPLIES WITH BS5852 SECTION 4,
IGNITION SOURCE 0 & 1, PLUS CLAUSE
11, IGNITION SOURCE 5 CRIB 5

MUNRO SADDLE



Code AMB310 **Width** 137cm **Roll Size** 35m

COMPLIES WITH BS5852 SECTION 4,
IGNITION SOURCE 0 & 1, PLUS CLAUSE
11, IGNITION SOURCE 5 CRIB 5

MUNRO LUI



Code AMB312 **Width** 137cm **Roll Size** 35m

COMPLIES WITH BS5852 SECTION 4,
IGNITION SOURCE 0 & 1, PLUS CLAUSE
11, IGNITION SOURCE 5 CRIB 5

MUNRO CHARN



Code AMB313 **Width** 137cm **Roll Size** 35m

COMPLIES WITH BS5852 SECTION 4,
IGNITION SOURCE 0 & 1, PLUS CLAUSE
11, IGNITION SOURCE 5 CRIB 5

GALWAY RATHBAUN



Code **Width** **Roll Size**
 AMB201 137cm 35m

COMPLIES WITH BS5852 SECTION 4,
 IGNITION SOURCE 0 & 1, PLUS CLAUSE
 11, IGNITION SOURCE 5 CRIB 5

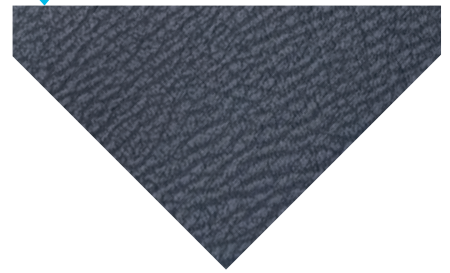
GALWAY EYRE



Code **Width** **Roll Size**
 AMB202 137cm 35m

COMPLIES WITH BS5852 SECTION 4,
 IGNITION SOURCE 0 & 1, PLUS CLAUSE
 11, IGNITION SOURCE 5 CRIB 5

GALWAY ARAN



Code **Width** **Roll Size**
 AMB206 137cm 35m

COMPLIES WITH BS5852 SECTION 4,
 IGNITION SOURCE 0 & 1, PLUS CLAUSE
 11, IGNITION SOURCE 5 CRIB 5

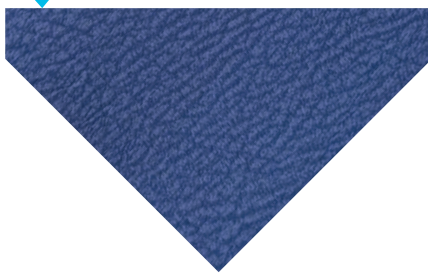
GALWAY CLIFDEN



Code **Width** **Roll Size**
 AMB210 137cm 35m

COMPLIES WITH BS5852 SECTION 4,
 IGNITION SOURCE 0 & 1, PLUS CLAUSE
 11, IGNITION SOURCE 5 CRIB 5

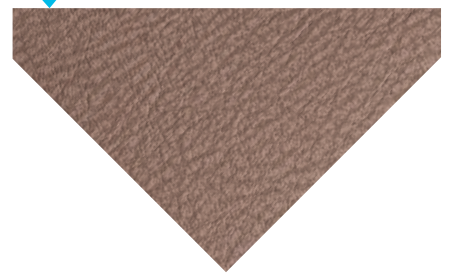
GALWAY SPIDDAL



Code **Width** **Roll Size**
 AMB211 137cm 35m

COMPLIES WITH BS5852 SECTION 4,
 IGNITION SOURCE 0 & 1, PLUS CLAUSE
 11, IGNITION SOURCE 5 CRIB 5

GALWAY BARNA



Code **Width** **Roll Size**
 AMB213 137cm 35m

COMPLIES WITH BS5852 SECTION 4,
 IGNITION SOURCE 0 & 1, PLUS CLAUSE
 11, IGNITION SOURCE 5 CRIB 5

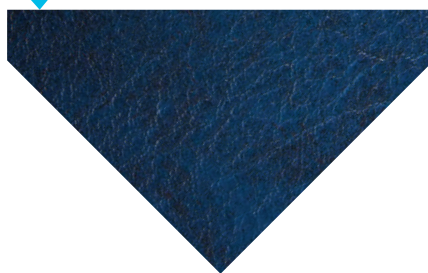
TINTO NUBIAN BLACK



Code **Width** **Roll Size**
 AMB801 137cm 35m

COMPLIES WITH BS5852 SECTION 4,
 IGNITION SOURCE 0 & 1, PLUS CLAUSE
 11, IGNITION SOURCE 5 CRIB 5

TINTO MEMPHIS BLUE



Code **Width** **Roll Size**
 AMB802 137cm 35m

COMPLIES WITH BS5852 SECTION 4,
 IGNITION SOURCE 0 & 1, PLUS CLAUSE
 11, IGNITION SOURCE 5 CRIB 5

Many more
 colours are available.
 Call or email to
 discuss with us
 further.

Faux Leather

DOMESTIC BLACK VINYL



Code
VIND001

Width
137cm

Roll Size
30m

COMPLIES WITH BS5852 SCHEDULE 4
PART 1 AND SCHEDULE 5 PART 1

DOMESTIC BROWN VINYL



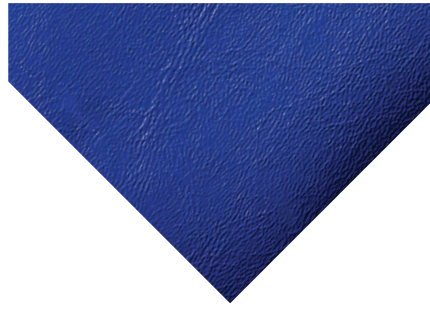
Code
VIND002

Width
137cm

Roll Size
30m

COMPLIES WITH BS5852 SCHEDULE 4
PART 1 AND SCHEDULE 5 PART 1

DOMESTIC BLUE VINYL



Code
VIND003

Width
137cm

Roll Size
30m

COMPLIES WITH BS5852 SCHEDULE 4
PART 1 AND SCHEDULE 5 PART 1

DOMESTIC BEIGE VINYL



Code
VIND004

Width
137cm

Roll Size
30m

COMPLIES WITH BS5852 SCHEDULE 4
PART 1 AND SCHEDULE 5 PART 1

DOMESTIC WHITE VINYL



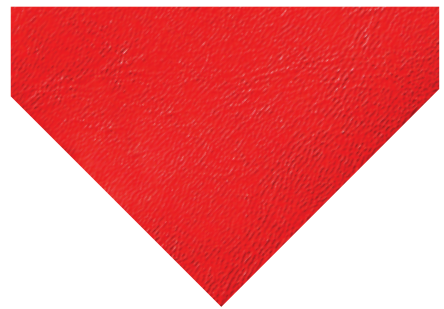
Code
VIND005

Width
137cm

Roll Size
30m

COMPLIES WITH BS5852 SCHEDULE 4
PART 1 AND SCHEDULE 5 PART 1

DOMESTIC RED VINYL

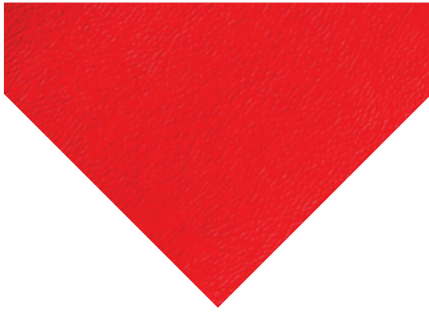


Code
VIND007

Width
137cm

Roll Size
30m

COMPLIES WITH BS5852 SCHEDULE 4
PART 1 AND SCHEDULE 5 PART 1

CONTRACT RED VINYL

Code
VINC001

Width
137cm

Roll Size
25m

COMPLIES WITH BS5852 SECTION 4,
IGNITION SOURCE 0 & 1, PLUS CLAUSE
11, IGNITION SOURCE 5 CRIB 5

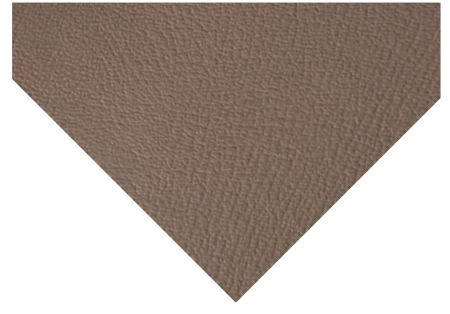
CONTRACT BLACK VINYL

Code
VINC002

Width
137cm

Roll Size
25m

COMPLIES WITH BS5852 SECTION 4,
IGNITION SOURCE 0 & 1, PLUS CLAUSE
11, IGNITION SOURCE 5 CRIB 5

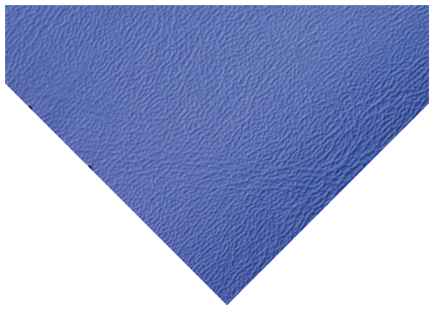
CONTRACT GREY VINYL

Code
VINC003

Width
137cm

Roll Size
25m

COMPLIES WITH BS5852 SECTION 4,
IGNITION SOURCE 0 & 1, PLUS CLAUSE
11, IGNITION SOURCE 5 CRIB 5

CONTRACT BLUE VINYL

Code
VINC004

Width
137cm

Roll Size
25m

COMPLIES WITH BS5852 SECTION 4,
IGNITION SOURCE 0 & 1, PLUS CLAUSE
11, IGNITION SOURCE 5 CRIB 5

CONTRACT BROWN VINYL

Code
VINC005

Width
137cm

Roll Size
25m

COMPLIES WITH BS5852 SECTION 4,
IGNITION SOURCE 0 & 1, PLUS CLAUSE
11, IGNITION SOURCE 5 CRIB 5

CONTRACT IVORY VINYL

Code
VINC006

Width
137cm

Roll Size
25m

COMPLIES WITH BS5852 SECTION 4,
IGNITION SOURCE 0 & 1, PLUS CLAUSE
11, IGNITION SOURCE 5 CRIB 5

Our contract vinyl is FR treated to comply with BS5852 Section 4 Ignition Source 0 & 1 plus clause 11, Ignition source 5 CRIB 5 when used in combination with CMHR foam.

Our domestic vinyl offers an excellent budget option for faux leather fabric in a domestic environment.

Packaging

BLACK SHRINK WRAP



Code
PAC001

Size
400mm

Packed in
250m roll

CLEAR SHRINK WRAP

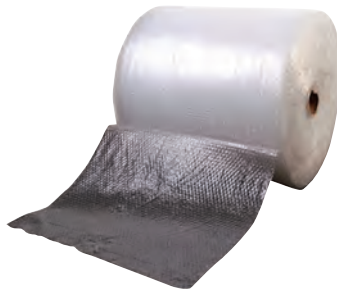


Code
PAC007

Size
400mm

Packed in
300m roll

BUBBLE WRAP



Code
WRA070

Size
600mm

Packed in
100m roll

LAY FLAT TUBING



Code
PAC012

Size
36"

Packed in
30kg/Roll

Description
Packaging used primarily for headboards, to avoid damage in transportation.

BLUE FOAM CORNER PROTECTORS



Code
PAC014

Size
80mm

Packed in
160/box

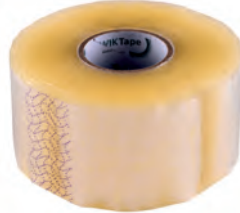
Custom branded packaging tape with your choice of company logo and colour can be supplied. Call the sales office to discuss this further.

CLEAR PACKAGING TAPE



| Code | Size | Description | Packed in |
|--------|------|-------------|-----------|
| BAT010 | 48mm | Standard | 66m roll |

PREMIUM CLEAR TAPE



| Code | Size | Description | Packed in |
|--------|------|-------------|-----------|
| BAT015 | 50mm | Premium | 66m roll |

BROWN PACKAGING TAPE



| Code | Size | Packed in |
|--------|------|-----------|
| BAT011 | 48mm | 66m roll |

TAPE GUN



| Code |
|--------|
| BAT020 |

80G DINING CHAIR BAGS



| Code | Size | Packed in |
|--------|-----------------------------|-----------|
| BAG145 | 660 x 1120mm (26" x 44") | 250/roll |

THIN 100G PACKAGING BAGS



| Code | Size | Packed in |
|--------|-------------------------------|-----------|
| BAG185 | 1829 x 1371mm (72" x 54") | 200/roll |
| BAG200 | 3048 x 1371mm (120" x 54") | 100/roll |

MEDIUM 150G PACKAGING BAGS



| Code | Size | Packed in |
|--------|-------------------------------|-----------|
| BAG150 | 1829 x 1371mm (72" x 54") | 125/roll |
| BAG165 | 3048 x 1371mm (120" x 54") | 85/roll |

HEAVY 180G PACKAGING BAGS



| Code | Size | Packed in |
|--------|-------------------------------|-----------|
| BAG175 | 1829 x 1371mm (72" x 54") | 125/roll |
| BAG190 | 3048 x 1371mm (120" x 54") | 85/roll |

VERY HEAVY 380G PACKAGING BAGS



| Code | Size | Packed in |
|--------|-------------------------------|-----------|
| BAG210 | 1829 x 1371mm (72" x 54") | 60/roll |
| BAG220 | 3048 x 1371mm (120" x 54") | 40/roll |

Glossary

| Item | Page | Item | Page |
|-----------------------|--------|------------------------|---------------|
| 14 Series Staples | 45 | Crib 5 Fabric | 65,96-103,105 |
| 71 Series Staples | 44 | Crib 5 Mattresses | 84,85 |
| Acrylic Buttons | 87 | Crystal Buttons | 87 |
| Adhesive | 42 | Curved Needles | 91 |
| Aerosols | 42-43 | Cushions | 77 |
| Air Hose | 93 | D Nuts | 80 |
| Ambla Fabric | 96-103 | Dacron | 66 |
| Angled Legs | 25 | Decorative Nails | 54-57 |
| Anti Slip Cloth | 69 | Diamonte Buttons | 87 |
| Antique Nails | 56 | Divan Bed Clips | 82 |
| Arm Facing Fixings | 80 | Domes of Silence | 41 |
| Back Tack Strip | 58 | Double Coil Springs | 53 |
| Back Webbing | 48 | Drawer Runners | 83 |
| Ball Castors | 32 | Duck Feathers | 68 |
| Barrier Cloth | 65 | Dust Covers | 107 |
| Base Cloth | 62 | Dypril | 62 |
| Bed Accessories | 83 | Elastic | 75 |
| Bed Actions | 84,85 | Elastic Webbing | 48 |
| Bed Brackets | 83 | Embellishers | 37 |
| Black & White Webbing | 49 | Fabric Cleaner | 43 |
| Black Staples | 44 | Fabric Cutter | 94 |
| Black Webbing | 49 | Fabric Protector | 43 |
| Blind Seam Profile | 61 | Fabrics | 62-65,96-105 |
| Blind Tacking Strip | 58 | Facing Fixings | 80 |
| Blue Foam | 76,77 | Faux Leather | 104,105 |
| B-Nuts | 80 | Feather Cushions | 77 |
| Bolts | 83 | Feathers | 68 |
| Brad Nails | 45 | Felt Pads | 41 |
| Brass Nails | 56 | Feltex | 67 |
| Bronze Ren. Nails | 56 | Felts | 67 |
| Bubble Wrap | 106 | Fibre Cushions | 77 |
| Buckram | 69 | Fibre Tack Strip | 58 |
| Bun Feet | 18,19 | Fibreboard | 69 |
| Button Backs | 70 | Fibres | 66,68 |
| Button Hammer | 71 | Fillings | 66-68 |
| Button Machine | 71 | Finish Nails | 45 |
| Button Tops | 70 | Fire Labels | 72-73 |
| Button Twine | 75 | Fixings | 80-83 |
| Buttons | 70 | Flanged Edge Rolls | 61 |
| Calico | 64 | Fleece Lined Polyprop | 62 |
| Cambric | 64 | Flexfelt | 67 |
| Canvas | 63 | Flexible Tacking Strip | 59 |
| Card Tack Strip | 58 | Floor Protectors | 41 |
| Cardboard | 69 | Foam | 76 |
| Carded Fibre | 66 | Foam Backed Tack Strip | 59 |
| Castor Cups | 37 | Foam Cleaner | 43 |
| Castored Feet | 10-15 | Foam Cushions | 77 |
| Castors | 32-36 | Foam Mattresses | 85 |
| Cauldron Castors | 35 | Foam Profiles | 61,78-79 |
| Chair Bags | 107 | Foam Sheets | 76 |
| Chalk | 94 | FR Barrier Cloth | 65 |
| Chrome Legs | 28-31 | FR Labels | 72,73 |
| Chrome Nails | 56 | Frame Staples | 45 |
| Chrome Swivel Base | 86 | Gas Struts | 81 |
| Clic Clac Hinges | 81 | Glass Buttons | 87 |
| Clout Nails | 95 | Glides | 38-39,41 |
| Coir Fibre | 68 | Glue | 42,93 |
| Compressor | 93 | Glue Gun | 42,93 |
| Corner Protectors | 106 | Glue Sticks | 93 |
| Corovin | 62 | Greyboard | 69 |
| Cotton | 74,75 | Hammers | 88 |
| Cotton Felt | 67 | Headboard Bolts | 83 |
| Cotton Piping Cord | 60 | Headboard Brackets | 82 |
| Cotton Platform Cloth | 64 | Headboard Struts | 83 |
| Cotton Tape | 75 | | |

| Item | Page | Item | Page |
|--------------------------------------|-------------|------------------------|----------|
| Headboard Washers | 83 | Serpentine Springs | 52 |
| Hessian | 63 | Sew in Labels | 73 |
| Hessian Webbing | 49 | Sewing Thread | 74-75 |
| Hinges | 81 | Shallow Castors | 36 |
| Hog Rings | 92 | Shrink Wrap | 106 |
| Hook and Loop | 51 | Silentwire | 53 |
| Hook and Loop Receptive Lining Cloth | 64 | Silicone Spray | 43 |
| Insulator | 67 | Silk Film | 77 |
| Interliner | 65,69 | Sisal String | 75 |
| Jute Webbing | 49 | Skirt Stiffener | 69 |
| Labels | 72,73 | Slider Jig | 95 |
| Lashing Twine | 75 | Sliders | 50 |
| Leg Caps | 37 | Slipping Fabric | 69 |
| Lining Cloths | 64 | Sofa Bags | 107 |
| Loose Hair | 68 | Sofa Bed Mechanisms | 84,85 |
| Mallet | 88 | Soft Handle Shears | 90 |
| Mattresses | 84,85 | Spray Glue | 42 |
| Metal Legs | 28-31 | Spray Lubricant | 43 |
| Metal Tack Strip | 59 | Spring Clips | 53 |
| Metal Unit Connectors | 82 | Spring Insulator | 67 |
| Mushroom Glides | 39 | Springs | 52-53 |
| Nail Gun | 93 | Sprung Mattresses | 84,85 |
| Nail Head Trim | 54,55 | Sprung Seat Units | 53 |
| Nails | 45,56-57,95 | Spun Bonded Polyprop | 62 |
| Needlepunch | 63 | Staple Guns | 46,47 |
| Needles | 91 | Staple Lifters | 89 |
| Nickel Nails | 56 | Staples | 44,45 |
| Non-Slip Fabric | 69 | Stockinette | 77 |
| Oak Wooden Feet | 8,9 | Stool Hinge | 81 |
| Open Ended Zip | 50 | Studs | 56,57 |
| Packaging | 106,107 | Superloop Springs | 52 |
| Packaging Tape | 107 | Swivel Bases | 86 |
| Paper Piping Cord | 60 | Tacking Strip | 58-59 |
| Piping Cord | 60 | Tacks | 95 |
| Pirelli Webbing | 49 | Tag Gun | 73 |
| Plastic Coated Tacking Strip | 59 | Tape | 107 |
| Plastic Domes of Silence | 41 | Tape Gun | 107 |
| Plastic Edge Roll | 61 | Tapered Legs | 22-24 |
| Plastic Furniture Bags | 107 | Thread | 74-75 |
| Plastic Glides | 38,39 | Thread Snips | 90 |
| Plastic Moulded Legs | 40 | Three Fold Bed Actions | 85 |
| Plastic Piping Cord | 60 | T-Nuts | 80 |
| Plastic Unit Connectors | 82 | Tools | 88-95 |
| Poly Cotton Lining Cloth | 64 | Turned Legs | 20,21 |
| Polyester Insulator | 67 | Twine | 75 |
| Polyester Lining Cloth | 64 | Twist Pins | 95 |
| Polyester Wadding | 66 | Two fold bed actions | 84 |
| Polyfoam | 78-79 | Undyed Calico | 64 |
| Polyfoam Piping Cord | 60 | Unit Connectors | 82 |
| Polypropylene Base Cloth | 62 | Upholstery Fabrics | 96-105 |
| Polypropylene Webbing | 49 | Upholstery Pins | 91 |
| Profiles | 61,78-79 | Wadding | 66 |
| Protective Spray | 43 | Wall Brackets | 82 |
| PVA Glue | 93 | Washers | 71,80,83 |
| Queen Anne Legs (Plastic) | 40 | Webbing Clips | 49 |
| Queen Anne Legs (Wood) | 27 | Webbing Pliers | 92 |
| Recon Foam | 76 | Webbing Stretcher | 92 |
| Regulators | 91 | White Foam | 76 |
| Round Socket Castors | 34 | Wood Glue | 93 |
| Rubber Webbing | 49 | Wooden Feet | 6-27 |
| Rubberised Hair Sheets | 68 | Wool Safe Barrier Felt | 65 |
| Ruler | 89 | Woven Polypropylene | 62 |
| Scissors | 90 | Zig Zag Springs | 52 |
| Screw Plate Castors | 35 | Zip Heads | 50 |
| Seat Webbing | 48 | Zipping | 50 |

Terms & Conditions

Peter Cook International (PCI) General terms and conditions of sale and supply

1. INTERPRETATION

1.1 In these Conditions:

“BUYER” means the person whose order for the Goods and/or Services is accepted by PCI. “BUYER’S ORDER” means the order for Goods (and/or Services) submitted by the Buyer to PCI. “CONDITIONS” means these terms and conditions of sale and supply and (unless the context otherwise requires) includes any special terms and conditions agreed in writing between the Buyer and PCI. “CONTRACT” means the contract for the supply of the Goods (and Services) incorporating the Conditions.

“FORCE MAJEURE” includes but shall not be limited to acts of God, governmental actions, war or national emergency, riot, civil commotion, fire, insufficient supply of electricity, gas, oil or water, damage to or loss or failure of machinery explosion, flood, epidemic, lock-outs, strikes or other labour disputes

(whether or not relating to PCI’s workforce) or restraints or delays affecting carriers including those used by PCI. For delivery of the Goods or inability or delay in obtaining supplies of adequate or suitable materials, “GOODS” mean the Goods (including any parts for them) which PCI is to supply in accordance with the Conditions and as detailed in the Buyer’s Order. “INTELLECTUAL PROPERTY RIGHTS” means any or all of the following: patents, trademarks, registered designs, design right, copyright, database right, inventions, trade secrets and other confidential information, know-how, business or trade names, rights to prevent passing off, and all other intellectual property rights and rights of a similar nature in any part of the world, whether registered or not or capable of registration or not and including all applications and the right to apply for any of the foregoing rights. “SERVICES” means installation services or other services agreed between PCI and the Buyer.

“WRITING” includes letter, e-mail, facsimile transmission and comparable means of communication.

1.2 Any reference in these Conditions to any statute or provision of a statute shall be construed as a reference to that statute or provision as amended, re-enacted or extended at the relevant time and any regulations made there under from time to time.

1.3 No variation to these Conditions shall be binding unless agreed in writing, signed by an authorised official of each party.

2. APPLICATION AND BASIS OF CONTRACT

The Contract shall constitute the entire agreement between PCI and the Buyer in respect of the supply of the Goods (and the Services) to the exclusion of all other terms and conditions (including any terms or conditions which the Buyer purports to apply under any purchase order, confirmation of order, specification or other document).

2.1 PCI employees or agents are not authorised to make any representations concerning the Product unless confirmed by PCI in writing. In entering into the Contract the Buyer acknowledges that it does not rely on any such representation which is not so confirmed.

2.2 Any advice or recommendation given by PCI, or its employees or agents, to the Buyer, or its employees or agents, as to the storage, application or use of the Product which is not confirmed in writing by the Seller is followed or acted upon entirely at the Buyer’s own risk and accordingly PCI shall not be liable for any such advice or recommendation which is not so confirmed.

2.3 Any typographical, clerical, or other error or omission in any sales literature, quotation, price list, acceptance of offer, invoice or other document or information issued by PCI shall be rectified by PCI as soon as discovered and such errors and omissions shall not be binding upon PCI nor permit the Buyer to vary the Contract or any of its terms.

3. NON STANDARD PRODUCTS/DRAWINGS

3.1 Where the Buyer wishes to purchase Goods from PCI which are not to the specification of goods ordinarily offered for sale by PCI (And identified in PCI’s catalogues from time to time) the following procedure shall apply:

(a) The Buyer will, at the time of submitting the Buyer’s Order, provide PCI with full specifications for such goods (including, where appropriate, drawings);

(b) On receipt of such specifications, PCI will contact the Buyer and either approve the same or suggest such amendments as PCI considers appropriate;

(c) If PCI approves such specifications in writing, the Buyer’s Order will be deemed accepted in accordance with Clause 3. Where PCI has suggested amendments, the Buyer will re-submit the specifications (amended to take account of PCI’s suggestions) for PCI to consider. The process set out above shall be repeated until the specifications are accepted by PCI.

3.2 All patterns, drawings, designs, samples and specifications submitted by the Buyer (and all intellectual property rights in the same) will, unless agreed otherwise, be the property of PCI.

3.3 At the same time as approving the Buyer’s specification, PCI will confirm to the Buyer the amount of any increase in PCI’s prices, necessary to comply with the Buyer’s specifications.

3.4 PCI Will be under no liability for, and the Buyer will fully indemnify PCI against, any awards, costs, claims, damages, demands, expenses, losses, or other liabilities (howsoever incurred)which arise in respect of; a) any and all infringement of any intellectual property rights of any third party which may arise as a result of PCI supplying Goods (or Services) which conform with such specifications of the Buyer as are submitted and agreed in accordance with this Clause; and: b) any errors in Goods which conform with samples previously approved or accepted by the Buyer.

4. BREAKAGES, SHORTAGES AND OTHER CLAIMS

4.1 The Buyer will inspect the Goods on delivery and sign an acceptance or delivery note endorsing thereon a full note of any shortage or damage. Such signature shall be conclusive evidence that the Goods are of the correct quantity and free from reasonably apparent defects and damage except as set out in such endorsement. If such note is not signed it will be deemed to have been signed without endorsement.

4.2 Any defect or damage (other than latent defects) which is not reasonably apparent on receipt shall be notified by the Buyer to PCI within two working days of receipt. Damaged Goods must be returned to PCI before replacement will be considered. Agreement and a Goods Return number must first be obtained from the PCI sales office before any Goods are returned.

4.3 Any claim for non-delivery of Goods shall be notified by the Buyer to PCI within two working days of the date of invoice or delivery note.

4.4 PCI Shall have no liability arising out of non-delivery or shortage in delivery (subject to consigning the correct quantity of Goods for delivery) deterioration or damage in transit but agrees to provide reasonable assistance (at the Buyer’s expense) to the Buyer in making a claim against the carrier.

5. RETURNS AND RESTOCKING CHARGES

When Goods are agreed for return or cancellation the Buyer shall pay a handling and restocking charge to cover administration and inspection charges involved in accepting the Goods back to stock. The charge will be subject to variation without notice but is currently 20% of the invoiced value of Goods. Non-standard products (supplied in accordance with Clause 4) cannot be accepted for return unless otherwise agreed.

6. TITLE, PROPERTY, RISK

6.1 Risk of damage to or loss of the Goods shall pass to the Buyer:

6.1.1 In the case of Goods to be delivered at PCI’s premises, at the time when PCI notifies the Buyer that the Goods are available for collection; or

6.1.2 In the case of Goods to be delivered otherwise than at PCI’s premises, at the time of delivery or, if the Buyer wrongfully fails to take delivery of the Goods, the time when PCI has tendered delivery of the Goods.

6.2 Notwithstanding delivery and the passing of risk in the Goods, or any other provision of these Conditions, the property in the Goods (legal and/or equitable) shall not pass to the Buyer until PCI has received in cash or cleared funds payment in full of the price of the Goods and all other Goods (or Services) agreed to be supplied by PCI to the Buyer for which payment is then due.

6.3 Until such time as the property in the Goods passes to the Buyer, the Buyer shall hold the Goods on a fiduciary basis as PCI’s bailee and shall keep the Goods separate from those of the Buyer and third parties and shall not destroy, deface or obscure any identifying mark

or packaging on or relating to the Goods. The Buyer shall maintain the Goods in a satisfactory condition insured on PCI’s behalf for their full price against all risks of loss or damage with an insurer or insurers approved by PCI on request, the Buyer shall permit PCI or its appointed representative to enter all premises at which the Goods may be stored for the purposes of assessing the extent of the Buyer’s compliance with its obligations under this Sub-clause and shall produce such policy or policies of insurance as are to be maintained together with evidence of payment of all premiums to PCI the Buyer shall hold any proceeds of such insurance on trust for PCI and not mix them with any other money, nor pay such proceeds into an overdrawn bank account.

6.4 The Buyer may resell the Goods to a third party before ownership has passed to it provided that any sale shall be affected in the ordinary course of the Buyer’s business at full market value. Nothing in this clause 6.4 shall make the Buyer the agent of PCI For any such sale and no contractual rights will be acquired by such third party against PCI.

6.5 Until such time as the property in the Goods passes to the Buyer (and provided the Goods are still in existence and have not been resold), PCI shall be entitled at any time to require the Buyer to deliver up the Goods to PCI and, if the Buyer fails to do so forthwith, to enter upon any premises of the Buyer or any third party where the Goods are stored and repossess under retention of title (following any detachment of the Goods from any property of the Buyer or any third party which may be necessary) the Goods. For the avoidance of doubt, PCI shall be entitled, after such repossession, to dispose of any such Goods as it sees fit.

6.6 The Buyer shall not be entitled to pledge or in any way charge by way of security for any indebtedness any of the Goods which remain the property of PCI but if the Buyer does so (or if the Buyer becomes or is declared insolvent (or being an individual, is declared bankrupt) or convenes a meeting of or proposes any arrangement or composition with its creditors or is subject to an order or resolution for winding up (except for the purposes of a solvent reconstruction or amalgamation) or suffers or permits any equivalent step to be taken in any jurisdiction) all money owing by the Buyer to PCI shall (without prejudice to any other right or remedy of PCI) forthwith become due and payable.

6.7 If PCI store, transport or work on any Goods or other property (including Goods about to be delivered by them or Goods intended for incorporation in or use on contract Goods and services) belonging to the Buyer or any third party, PCI does so at the Buyer’s sole risk and (except as provided in these conditions) PCI Shall have no liability to the Buyer or to any other party for loss, deterioration or damage to such Goods or other property howsoever arising and whether by negligence or otherwise.

6.8 In cases where PCI make a contract of carriage and/or arrange for insurance of Goods in transit they shall be deemed to be acting as the Buyer’s agent and sub-section (2) and (3) of Section 32 Sale of Goods Act 1979 shall not apply.

6.9 All estimates of costs, plans, drawings, catalogues, photographs, illustrations and similar descriptive material remain the property of PCI and shall be returned to them unless agreed otherwise. No item may be copied or handed to a third party without the consent of PCI.

7. PRICES

7.1 The price of the Goods shall be the PCI quoted price or where a price is not quoted, the price in the PCI published list of prices current at the date of acceptance of the Buyer’s Order.

7.2 All prices are:

(a) Ex-works (as defined in Incoterms 2010) unless agreed otherwise.

(b) Expressed in pounds sterling excluding V.A.T. and are subject to alteration without prior notification to cover any variations in cost to PCI of supplying the Goods (or Services).

(c) Exclusive of packing and delivery charges which will be added to the invoiced prices unless agreed in writing.

7.3 Where quotations are supplied they will be valid for 30 days from date of quotation unless otherwise agreed.

7.4 It is the buyer’s responsibility to confirm any prices at the point of purchase

8. TERMS OF PAYMENT

8.1 Unless otherwise agreed in writing by PCI and as a condition precedent to the performance of PCI's obligations under the Contract, payment in full for all supplies by PCI is due in advance.

8.2 Where the Buyer is a customer with an approved account (to whom clause 6.1 above shall not apply) payment shall be made within end of month + 30 days of the date of the invoice.

8.3 Payment shall be made in pounds sterling as set out on the invoice.

8.4 If the Buyer fails to make any payment on the due date, then without prejudice to any other right or remedy of PCI, PCI shall be entitled to:

8.4.1 cancel the Contract or suspend any further work for or deliveries to the Buyer

8.4.2 appropriate any payment made by the Buyer to such of the Goods or Services (or the Goods or Services supplied under any other contract between the Buyer and PCI) as PCI may think fit (notwithstanding any purported appropriation by the Buyer); and

8.4.3 charge the Buyer interest (both before and after any judgement) on the amount unpaid at the rate of 4% per annum above HSBC Bank base lending rate from time to time until further payment in full is made (a part of a month being treated as a full month for the purpose of calculating interest) and recover from the Buyer all expenses howsoever incurred in the collection of monies owing to PCI.

9. SPECIFICATIONS/WARRANTIES/LIABILITIES

9.1 The assessment of the Goods'; suitability, quality and fitness for purpose is the Buyer's responsibility irrespective of any specifications, formulations, data, literature and statements as to content, suitability, performance or otherwise, issued, and description and samples given, by PCI.

9.2 Goods are supplied on condition that the Buyer undertakes at all times to take notice of and comply with (and draw to third parties' attention and require them to take notice of and comply with) all instructions and recommendations issued with or contained on or relating to the Goods or relevant data sheets, and all reasonable and prudent precautions as to installation, use, maintenance, cleaning and otherwise. For the avoidance of doubt, where the Goods comprise internal or external lighting, the Buyer shall be responsible for ensuring that such equipment is properly installed by a qualified electrician. Where the Buyer carries out or procures installation, PCI shall not be liable to the Buyer or any third party for any loss or damage which arises from the installation and/or use of such equipment.

9.3 All sizes, colours, finishes and any other descriptions or specifications published in any brochures, promotional or other information published in any medium are as accurate as possible within normal manufacturing tolerances and, in keeping with its policy of continual development, PCI reserves the right to alter such specifications and to supply Goods to the Buyer reflecting such altered specifications without prior notice to the Buyer provided that such alterations do not materially affect the characteristics of the Goods. Slight deviations within accepted tolerances shall not entitle a Buyer to cancel an order, return Goods or claim compensation.

9.4 Wood stains will be matched as accurately as possible. However the Buyer recognizes and acknowledges that, if different base timbers are used or if woods of differing ages are utilised there may be a variance of grain pattern which gives a slight difference of colour even if the stain has been carefully matched.

9.5 When colours are shown in printed form they have been reproduced as accurately as possible within the limits of the printing process. Wherever possible the Buyer should provide colour swatches or paint references at time of enquiry.

9.6 The Buyer shall be responsible for ensuring the suitability of any installation advice given by PCI and the suitability of fixing screws recommended or provided by PCI or any third party.

9.7 If a fabric or other material has been specifically requested by the Buyer to be used in the construction of Goods, it is his/her responsibility to ensure that the material meets any relevant performance or safety regulations ruling at that time. The Buyer agrees expressly to indemnify PCI in full in respect of any remedial work, alteration work, reconstruction and subsequent reinstatement together with all costs, claims and demands which might be made against PCI. In relation to the manufacture, supply and fitting of the Goods ordered and all and any additional costs so arising will be added to the total invoice value by PCI and payment of the additional sums so arising must be made in full by the Buyer upon presentation of the invoice.

9.8 Any typographic, clerical or other error or omission in sales literature, quotation or price list, acceptance of

offer, invoice or other document or information issued by PCI shall be subject to correction without any liability on the part of PCI.

10. NON DELIVERY AND DELAY

10.1 Dates for delivery are approximate and, unless the parties agree in writing otherwise, time shall not be of the essence of the agreement.

10.2 The Seller shall not be liable for any direct or indirect loss arising from non-delivery or delay in delivery of any Products as a result of any cause beyond the Seller's reasonable control. The Buyer shall have no right to cancel any order, nor to refuse delivery of any consignment on the grounds of delay or non-delivery resulting from such a cause.

10.3 Where 24 hour availability is mentioned in this brochure this is deemed to be applicable to working days of Monday to Friday excluding weekends.

11. DEFECTIVE GOODS, LIMITATION OF LIABILITY AND INDEMNITY

11.1 PCI warrants that Goods will conform in all material respects to their specification and will be free from defects in design, material and workmanship under normal conditions of use for a period of 12 months from the date of their initial use or 12 months from delivery, whichever is the first to expire provided that the defect is not attributable to fair wear and tear or any fault or damage arising from impact, modification, accident, neglect, abnormal working conditions, inappropriate working conditions, inappropriate use or treatment, incorrect handling or exposure to such other substances as may be injurious to such materials.

11.2 PCI shall not be liable for a breach of the warranty in clause 13.1 or any other warranty, condition or guarantee if:

(a) The total price for the Goods has not been paid by the due date for payment;

(b) The Buyer makes any further use of such Goods after becoming aware of the defect;

(c) The defect arises because the Buyer failed to follow PCI's oral or written instructions as to the storage, installation, commissioning, use or maintenance of the Goods; or

(d) The Buyer alters or repairs the Goods without the prior written consent of PCI.

11.3 If delivery is not refused, and the Buyer does not notify PCI in accordance with clause 6, the Buyer shall not be entitled to reject the Goods and PCI shall have no liability for any defect or failure which was reasonably apparent upon inspection, and the Buyer shall be bound to pay the price as if the Goods had been delivered in accordance with the Contract. In no event shall the Buyer be entitled to reject the Goods on the basis of any defect or failure, which is so slight that it would be unreasonable for him to reject them.

11.4 PCI's sole liability for breach of the warranty set out in clause 13.1 shall be at PCI's option to repair or replace defective Goods, or to refund the Contract price.

11.5 If PCI complies with condition 13.4 it shall have no further liability for a breach of the warranty in clause 13.1 in respect of such Goods.

11.6 Any Goods replaced by PCI will belong to PCI and any repaired or replacement Goods shall be guaranteed on these terms for the unexpired portion of the 12 month period.

11.7 Nothing in these Conditions excludes or limits the liability of PCI for death or personal injury caused by PCI's negligence or fraudulent misrepresentation.

11.8 Subject to the provisions of clauses 13.4 and 13.7, PCI shall not be liable for any loss of profit, loss of business, depletion of goodwill, damage to reputation or otherwise or other economic loss (whether direct or indirect) or any special or indirect losses, costs, expenses or other claims for special compensation whatsoever and howsoever caused (whether by negligence or otherwise) which arise out of or in connection with the Contract.

11.9 Without prejudice to the other provisions of this clause 13, PCI's aggregate liability under the Contract in respect of any breach of contract, negligence or otherwise, shall not exceed the price paid by the Buyer for the Goods and/or Services.

11.10 All other conditions, warranties or other terms whether, express or implied, statutory or otherwise, inconsistent with this clause 13 are hereby expressly excluded to the fullest extent permitted by law.

11.11 The Buyer shall indemnify PCI against all liability incurred by PCI to third parties arising in any way out of the performance of the Contract.

12. SUSPENSION AND TERMINATION

12.1 IF:

12.1.1 the Buyer exceeds any credit limit; or

12.1.2 the Buyer commits a material breach of the Contract or any other contract with PCI; or

12.1.3 any event conferring a right of termination under point 13 below shall have occurred. Then in any such case PCI shall be entitled (without prejudice to any other of its rights here under) to suspend further performance of the Contract for such reasonable time as PCI shall deem fit and for this purpose to stop any Goods in transit to the Buyer or in the course of installation.

13. TERMINATION

PCI may, by notice to the Buyer, terminate supply if the Buyer commits a material breach of the Contract or any other contract with PCI (such breach, if capable of remedy, not having been remedied within 7 days of notice to do so) or any judgement against the Buyer is unsatisfied for 14 days or (being an individual) the Buyer dies or commits any act of bankruptcy or (being a corporation) enters liquidation or receivership or ceases or threatens to cease to carry on business or reasonably apprehends that any of the events mentioned above is about to occur in relation to the Buyer and notifies the Buyer accordingly or any event analogous to any of the foregoing shall happen in any other jurisdiction and any such termination shall be without prejudice to the Buyer's obligations and PCI's rights under the Contract.

14. CANCELLATION

No order which has been accepted by PCI may be cancelled by the Buyer except with the agreement in writing of PCI and on terms that the Buyer shall indemnify PCI in full against all loss (including loss of profit) costs (including the cost of all labour and materials used) damages, charges and expenses incurred by PCI as a result of cancellation.

15. ASSIGNMENT

The Buyer may not assign any Contract or any rights there under without the prior written consent of PCI. PCI may freely assign, transfer or subcontract the whole or any part of any Contract and, if requested by PCI, the Buyer shall take all steps which are necessary (including, without limitation, the execution of all documents) to give effect to such assignment, transfer or subcontracting.

16. EXPORT ORDERS

16.1 The Buyer shall be exclusively responsible for (and shall indemnify PCI against) all customs duties and other costs of importation and costs of obtaining confirmation of payments, letters of credit and for obtaining all licences relevant to the sale and delivery of and payment for the Goods (delivery being subject to the Buyer obtaining all such licences).

16.2 Unless otherwise agreed in writing payment for international sales shall not be deemed completed unless payment in full has either been received by PCI or been secured by irrevocable letter of credit (payable on sight) issued and confirmed by a bank registered in England or Wales.

16.3 PCI delivery terms will conform to Incoterms 2010.

17. JURISDICTION

17.1 These Conditions shall be interpreted without reference to their headings, which are for convenience only.

17.2 The contract shall be governed by English Law and the Buyer shall submit to the exclusive jurisdiction of the English Courts.

17.3 Any provision of these Conditions held by a court of law to be invalid shall be severable and shall to the extent necessary to prevent such invalidity be deemed to be omitted from these Conditions and any liability which would otherwise have been excluded or limited shall nevertheless be subject to the remaining provisions of these Conditions.

17.4 The provisions of these Conditions shall remain in full force and effect notwithstanding that the parties' obligations under the Contract may have been performed or discharged.

17.5 The waiver of any breach of any of these Conditions or the non enforcement of any of these Conditions shall not prevent the subsequent enforcement of that Condition or the exercise of any right arising from that breach and shall not be deemed a waiver of any subsequent breach.

17.6 Any entity who or which is not expressly a party to the Contract shall have no right under the Contracts (Rights of Third Parties) Act 1999 to enforce any term of the Contract and the provisions of the Contracts (Rights and Third Parties) Act 1999 shall be expressly excluded from this Agreement.

18. CONFIDENTIALITY

18.1 The Buyer shall keep all details of the Contract confidential. The Buyer must not disclose any aspect of the Contract to a third party without the consent of PCI. Any details including, but shall not be limited to, such as technical specifications, certificates or drawings supplied by PCI must remain confidential and must be returned to PCI upon demand.



Sales Offices

North

0113 235 1111

sales@petercookint.com

Midlands

0115 946 0006

trentside@petercookint.com

South

01844 873122

south@petercookint.com

Trade Counters

North

Aneal Business Centre

Leeds, LS9 0SG

Midlands

Acton Avenue

Long Eaton, NG10 1GA